

## Dane techniczne:

Kubatura:	1412 m <sup>3</sup>
Powierzchnia zabudowy:	235.82 m <sup>2</sup>
Powierzchnia całkowita:	451.92 m <sup>2</sup>
Powierzchnia netto:	321.79 m <sup>2</sup>
Powierzchnia użytkowa:	308.1 m <sup>2</sup>
Wymiary domu:	14.64 x 20.51 m
Minimalne wymiary działki:	21.64 x 28.51 m
Wysokość do kalenicy:	9,25 m / 30,34 ft
Powierzchnia dachu:	331.6 m <sup>2</sup>
Kąt nachylenia dachu:	22 degrees

## Koszty realizacji:

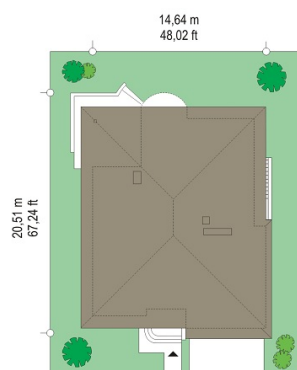
Realizacja stanu surowego otwartego:	85 800
Realizacja stanu surowego zamkniętego:	121 500
Koszt robót wykończeniowych:	121 900
Realizacja domu pod klucz:	243 300

Koszty są podane w cenach netto, należy doliczyć podatek VAT

## Materiały:

## Materials:

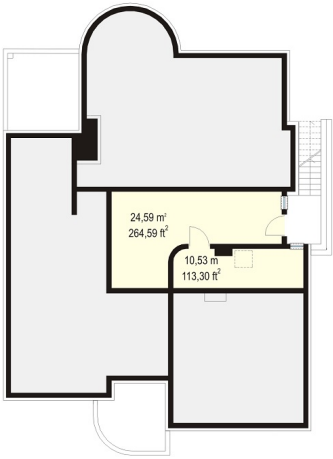
- Foundations - Poured concrete
- Exterior walls - bilayer porotherm 25 or U220 + 15 polystyrene
- Ceiling - monolithic reinforced concrete panels
- Elevation - thin-layer plaster
- Roof - tile or metal roofing tile

**CENA PROJEKTU: 1450.00 \$**

	Energy-saving package	bezpł.
	Ventilation and fireplace package	90
	Central vacuum package	70
	The electronic version of the project	120
	Solar installation package	70
	Underfloor heating package	80
	Heat pump package	70
	Water jacket package	70
	Boiler for solid fuel package	80
	Air conditioning package	80
	Fencing projects	140
	Septic tanks sealed package	bezpł.

Gabriela's house plan is a prestigious villa, with one-storey block covered with a hipped roof. House is designed for a family of 4 - 6 people. The architecture of Gabriela's house refers to the modernist style, in the modern sense. Elements such as corner windows, balconies with rounded railings, curved bay window of the dining room, the division of the facade into horizontal stripes create an interesting styling of external architecture of the building. For this house plan several different variants of the arrangement of the facade was provided. The interior of the house: on the ground floor living space consists of a living room, dining room with beautiful bay window, a spacious lobby with comfortable stairs to the first floor, large kitchen with kitchenette for quick meals. From the living room we go to the arcade and on the terrace. On the ground floor there is also designed an office room, garage and boiler room. On the first floor there is a parent's apartment with bathroom, dressing room and terrace overlooking the garden; three bedrooms for children with bathroom, a laundry room and sports room. This house plan is also partial basement - cellar accessible from outside the house, by the steps from the garden. You can resign from the basement if the ground conditions do not allow for its construction. Gabriela house plan is also available in mirror version.

Rzuty:



Elewacje:





MG Projekt Pracownia Architektoniczna s.c. ul. Uczniowska 14 03-112 Warszawa  
tel.: 22 676 66 83, 22 676 66 88, fax: 22 676 66 82, mob.: 600 392 884,  
tylko przedstawiciele 606 200 136, [www.mgprojekt.com.pl](http://www.mgprojekt.com.pl),  
[mgprojekt@mgprojekt.com.pl](mailto:mgprojekt@mgprojekt.com.pl)

MG Projekt