

# 122.39 m<sup>2</sup>

# House on Park Street 6

## Dane techniczne:

Kubatura:	742 m <sup>3</sup>
Powierzchnia zabudowy:	203.91 m <sup>2</sup>
Powierzchnia całkowita:	264.4 m <sup>2</sup>
Powierzchnia netto:	128.55 m <sup>2</sup>
Powierzchnia użytkowa:	122.39 m <sup>2</sup>
Wymiary domu:	16.5 x 15.35 m
Minimalne wymiary działki:	23.5 x 24.85 m
Wysokość do kalenicy:	7,31 m / 23,98 ft
Powierzchnia dachu:	314.9 m <sup>2</sup>
Kąt nachylenia dachu:	35 degrees

## Koszty realizacji:

Realizacja stanu surowego otwartego:	52 020
Realizacja stanu surowego zamkniętego:	82 650
Koszt robót wykończeniowych:	86 420
Realizacja domu pod klucz:	169 070

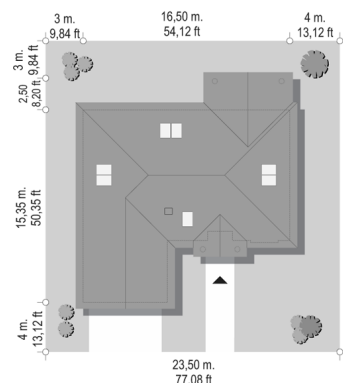
Koszty są podane w cenach netto, należy doliczyć podatek VAT

## Materiały:

- Foundations - concrete bench and foundation walls with concrete blocks
- External walls - brick walls -porotherm 25 blocks + polystyrene + thin-layer plaster
- Ceiling - monolithic
- Elevation - thin-layer plaster on polystyrene
- Roof - tile or metal roofing tile



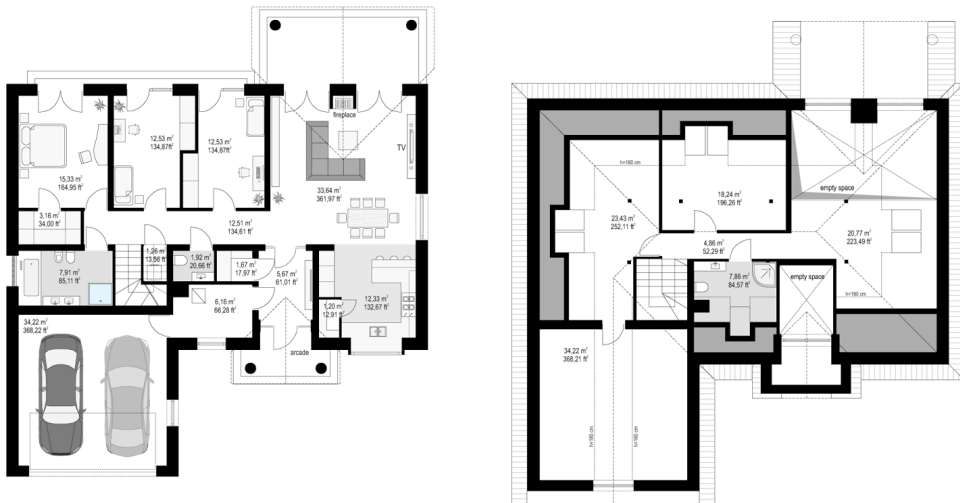
**CENA PROJEKTU: 1300.00 \$**



	Energy-saving package	bezpł.
	Ventilation and fireplace package	90
	Central vacuum package	70
	The electronic version of the project	120
	Solar installation package	70
	Underfloor heating package	80
	Heat pump package	70
	Water jacket package	70
	Boiler for solid fuel package	80
	Air conditioning package	80
	Fencing projects	140
	Septic tanks sealed package	bezpł.

House on Park Street 6 is another variant version of the popular house plan from the series "House on Park Street". This version is bigger than other house plans. A single-family house for a 3-6-person family, one-storey, with an attic, which can be easily adapted and used for a usable attic. The building has a rectangular shape, covered with a fall roof. From the side of the front elevation, a two-station garage is added to it. The representative front of the house, reminiscent of American residences from the rich suburbs, is decorated with beautiful, roofed roofs above the entrance door. This is the central element of the front elevation that focuses the whole attention. Similarly from the garden side: the main element decorating the elevation is a beautiful roof over the terrace, and large glazed living room. The architecture of the house, saturated with classical details, although subdued, creates an elegant home with a timeless appearance. Interior: the entire utility part of the house is located on the ground floor. The attic can be arranged as an additional usable space, or it can be left as an attic. If it is used as an usable attic, then there are two rooms, a bathroom and an entresol above the space above the living room. We come to the house through a comfortable hall with a cloakroom, with a raised ceiling, from which we get to the lobby, or to the side - to the boiler room and garage. In front of the entrance, we enter the open living space of a combined living room and dining room, and a separate beautiful kitchen with a pantry. Above the living room we have open ceiling adding to the living room more space. The opening is connected with the entresol in the attic. In the night part of the house we have three bedrooms, toilet and bathroom. Children's bedrooms have built-in wardrobes. Parents' bedroom - a dressing room. All bedrooms have beautiful windows overlooking the garden. Above the garage there is an additional utility attic. The house is simple to build and energy-saving. This is a perfect proposition for people who do not plan to spend a very large amount on building a house, or do not want to give up their dreams without having a large plot of land.

## Rzuty:



## Elewacje:

