

183.06 m²

Unique 2 house plan

Dane techniczne:

Kubatura:	1311 m ³
Powierzchnia zabudowy:	313.98 m ²
Powierzchnia całkowita:	313.98 m ²
Powierzchnia netto:	189.22 m ²
Powierzchnia użytkowa:	183.06 m ²
Wymiary domu:	20.51 x 24.47 m
Minimalne wymiary działki:	27.91 x 32.47 m
Wysokość do kalenicy:	6,33 m / 20,76 ft
Powierzchnia dachu:	459.7 m ²
Kąt nachylenia dachu:	30 degrees

Koszty realizacji:

Realizacja stanu surowego otwartego:	89 050
Realizacja stanu surowego zamkniętego:	119 580
Koszt robót wykończeniowych:	86 160
Realizacja domu pod klucz:	205 730

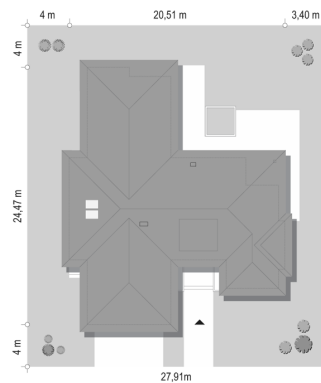
Koszty są podane w cenach netto, należy doliczyć podatek VAT

Materiały:

- Foundations - concrete bench and foundation walls with concrete blocks
- External walls - brick walls -porotherm 25 blocks + polystyrene + thin-layer plaster
- Ceiling - Teriva
- Elevation - thin-layer plaster on polystyrene
- Roof - tile or metal roofing tile



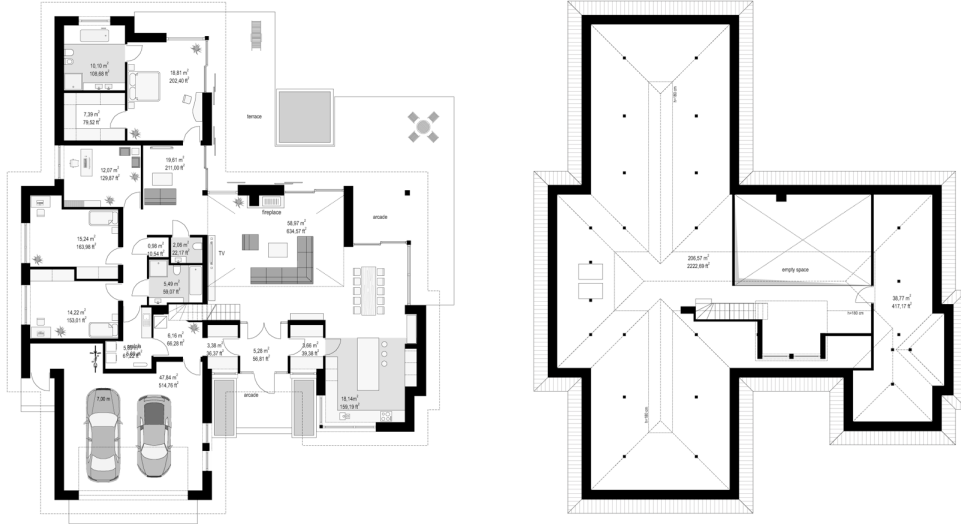
CENA PROJEKTU: 1550.00 \$



	Energy-saving package	bezpł.
	Ventilation and fireplace package	90
	Central vacuum package	70
	The electronic version of the project	120
	Solar installation package	70
	Underfloor heating package	80
	Heat pump package	70
	Water jacket package	70
	Boiler for solid fuel package	80
	Air conditioning package	80
	Fencing projects	140
	Septic tanks sealed package	bezpł.

Unique 2 house plan is another one-story single-family house from the "Unique" series. It is a luxurious one-story villa, which gives the residents the convenience of living on one floor without going up the stairs and an invaluable closeness to the surrounding garden. The building was designed on the plan of the letter "T", with a protruding part of the garage, and from the garden side with the night part of the residents' bedrooms. The house is covered with a multi-slope gentle roof with tiles. Above the ground floor there is additional space for development - attic, which can be adapted as a usable attic. Above the living area we have a beautiful spatial opening - emptiness, up to the top of the roof, and in the attic - a beautiful entresol. Modern architecture and an interesting detail of the facade of the house are combined here with the traditional form of the building. As a result, we have a wide, luxurious bungalow. We enter the house with a representative glass entrance, through the front patio, with beautiful flower beds with greenery on the sides of the entrance platform. From the spacious porch, we go straight to the open living area with the height of two storeys - to the large living room, from which, through large glazing, there is a view of the terrace and the garden. From the porch we can go to the locker room, utility rooms, garage, and through the pantry to the kitchen. The living space is a living room, dining room, and a beautiful kitchen with an island. Thanks to the emptiness above the living room, the impression of the spaciousness of the interior is simply amazing. In the night part, we have: parents' apartment, with own bathroom and dressing room, an additional room - a study, two children's bedrooms with a bathroom, an additional toilet for guests, and a mini-lounge - a TV corner. From the night part, we also have an access to laundry room. The house has a very functional interior, facilitating everyday life. Open spaces, and glazing combining the interior with the garden will give an invaluable sense of luxury and high quality of life. And all this for a small area and a fairly simple building. Unique 2 is a great example that dreams can be realized with a reasonable and non-bankruptcy way. The house is, of course, energy-saving, designed with modern materials.

Rzuty:



Elewacje:



MG Projekt Pracownia Architektoniczna s.c. ul. Uczniowska 14 03-112 Warszawa
tel.: 22 676 66 83, 22 676 66 88, fax: 22 676 66 82, mob.: 600 392 884,
tylko przedstawiciele 606 200 136, www.mgprojekt.com.pl,
mgprojekt@mgprojekt.com.pl

MG Projekt