

# 245.25 m<sup>2</sup>

# House with a view 2 C

### Dane techniczne:

Kubatura:	1545 m <sup>3</sup>
Powierzchnia zabudowy:	220.47 m <sup>2</sup>
Powierzchnia całkowita:	399.07 m <sup>2</sup>
Powierzchnia netto:	265.61 m <sup>2</sup>
Powierzchnia użytkowa:	245.25 m <sup>2</sup>
Wymiary domu:	23.05 x 14.09 m
Minimalne wymiary działki:	30.05 x 22.09 m
Wysokość do kalenicy:	11,30 m / 37,06 ft
Powierzchnia dachu:	340.5 m <sup>2</sup>
Kąt nachylenia dachu:	40 degrees

### Koszty realizacji:

Realizacja stanu surowego otwartego:	89 950
Realizacja stanu surowego zamkniętego:	134 680
Koszt robót wykończeniowych:	89 510
Realizacja domu pod klucz:	224 180

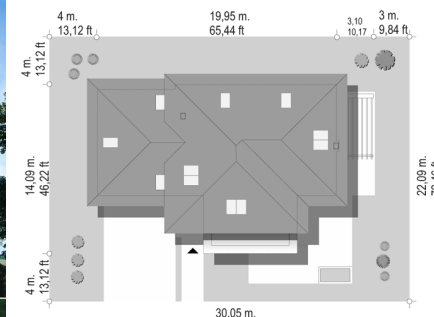
Koszty są podane w cenach netto, należy doliczyć podatek VAT

### Materiały:

- Foundations - concrete bench and foundation walls with concrete blocks
- External walls - brick walls -porotherm 25 blocks + polystyrene + thin-layer plaster
- Ceiling - monolithic
- Elevation - thin-layer plaster on polystyrene
- Roof - sheet metal seam (alternatively tile)



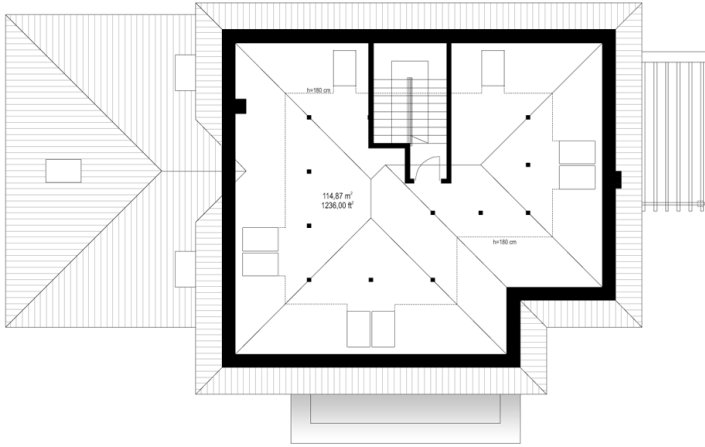
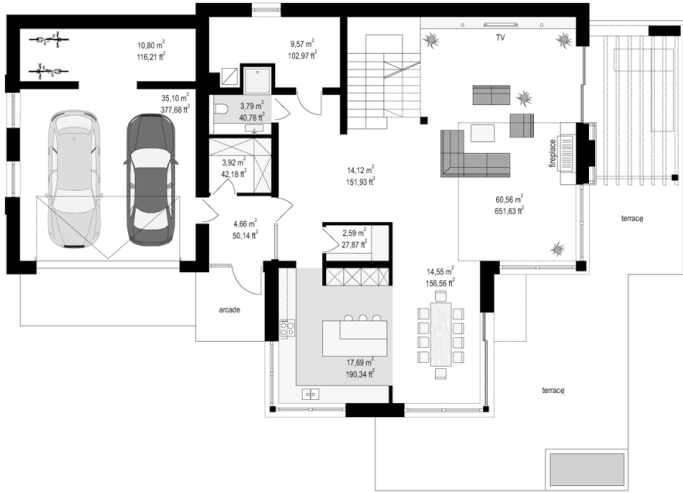
**CENA PROJEKTU: 1900.00 \$**



	Energy-saving package	bezpł.
	Ventilation and fireplace package	90
	Central vacuum package	70
	The electronic version of the project	120
	Solar installation package	70
	Underfloor heating package	80
	Heat pump package	70
	Water jacket package	70
	Boiler for solid fuel package	80
	Air conditioning package	80
	Fencing projects	140
	Septic tanks sealed package	bezpł.

House with a view 2 C is a project of single-family house with modern architecture, from the collection of popular series "Houses with a view". The building was composed of two main blocks - a two-storey core, covered with an L-shaped roof, and a one-story garage block covered by a three-sided roof. Due to the fairly large roof pitch, there is a large attic above the floor, which can be successfully adapted to the usable attic with additional rooms. The body of the building is decorated with a nice detail. Corner windows, large glazing, stone and wooden wall cladding - all these elements give the facade chic and elegant look. The building has a representative appearance - evokes the impression of comfort and luxury. The interior has been designed with a division into the living and utility space on the ground floor, and bedrooms upstairs. We enter the house with a well-lit vestibule with a cloakroom, immediately to a nice lobby, and then to the living room with emptiness and beautiful representative stairs, and a large kitchen with an island, and a dining room. In the utility part on the ground floor, we have a two-car garage with additional storage space and a separate boiler room. Living room and dining room open with large glazed windows on the wide terrace partially covered with a pergola. From the corner window of the kitchen, we can see the entrance and the entrance to the house. On the first floor, there is parents' apartment with dressing room, bathroom and own terrace available from the bedroom, as well as two children's bedrooms with bathroom. Above the garage we have a large additional attic space that can be used in any way. In the attic above the first floor we have a studio of over 60 sq m, which can also be easily freely adapted. The project is an excellent offer for investors who want a large house, but have limited space or a small plot, and is obligated to build a house with a roof with a higher inclination angle. This house plan will perfectly fit into the plot with a garden on the side, and on the plot with entry to the property from the sunny side - for example from the south. The building uses energy-efficient materials and technologies, so that the house will be inexpensive in later operation.

Rzuty:



Elewacje:



