

Dane techniczne:

Kubatura:	1080 m ³
Powierzchnia zabudowy:	207.7 m ²
Powierzchnia całkowita:	338.76 m ²
Powierzchnia netto:	202.15 m ²
Powierzchnia użytkowa:	195.05 m ²
Wymiary domu:	15.32 x 18.96 m
Minimalne wymiary działki:	23.32 x 28.67 m
Wysokość do kalenicy:	8,77 m / 28,77 ft
Powierzchnia dachu:	350.1 m ²
Kąt nachylenia dachu:	25 degrees

Koszty realizacji:

Realizacja stanu surowego otwartego:	71 050
Realizacja stanu surowego zamkniętego:	105 030
Koszt robót wykończeniowych:	100 110
Realizacja domu pod klucz:	205 140

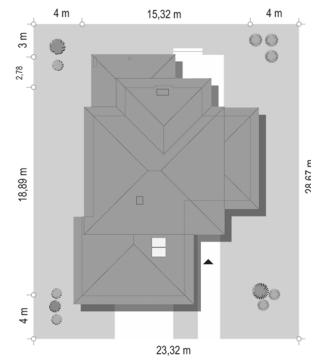
Koszty są podane w cenach netto, należy doliczyć podatek VAT

Materiały:

- Foundations - concrete bench and foundation walls with concrete blocks
- External walls - brick walls -porotherm 25 blocks + polystyrene + thin-layer plaster
- Ceiling - monolithic
- Elevation - thin-layer plaster on polystyrene
- Roof - sheet metal seam (alternatively tile)



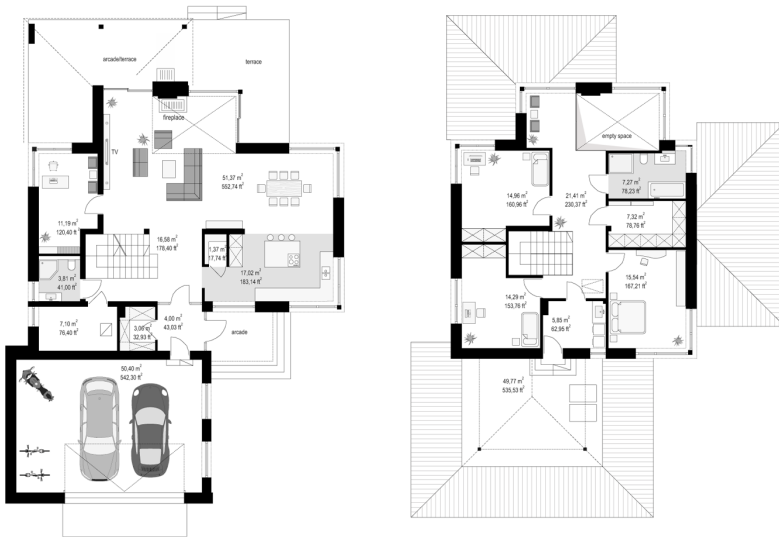
CENA PROJEKTU: 1590.00 \$



	Energy-saving package	bezpł.
	Ventilation and fireplace package	90
	Central vacuum package	70
	The electronic version of the project	120
	Solar installation package	70
	Underfloor heating package	80
	Heat pump package	70
	Water jacket package	70
	Boiler for solid fuel package	80
	Air conditioning package	80
	Fencing projects	140
	Septic tanks sealed package	bezpł.

House design The house with a view of 3 F is another proposal of our studio from the family of houses with a view. Under this name, there is a completely new and completely original modern two-story house, designed for a narrower plot, with a classical entrance from the north or east and a garden from the sunny side of the plot. The project assumes the front of the ground floor, the entrance and entrance courtyard, designed from the street, and from the garden side the maximum opening of the living area to the terraces by means of wide glazing. The intermingling blocks of the main storey core and additional one-storey blocks, combined with the beautiful corner glazing, stone and wooden wall cladding, give the building a modern and attractive silhouette. On the one hand, the house appears as a comfortable, luxurious suburban villa, on the other hand it captures human scale and coziness. In a word - it is a proposition just right for every family. The interior of the project is divided into a living and business part on the ground floor and bedrooms upstairs. We enter the house with the cloakroom directly from the glass corner visible from the front. We go straight from the living space, consisting of: a living room with emptiness, a hall with stairs, a dining room and a kitchen with an island. On the ground floor we have an additional room - a study room, a bathroom, a boiler room, and a very large garage with storage space. On the first floor there are three bedrooms, bathroom, wardrobe and laundry room, with access to the attic above the garage. The floor can be freely arranged - thanks to the monolithic ceiling you can freely move the partition walls. On the upper floor we also have a work area / mezzanine - a library and a void with a living room visible below. The project is an excellent offer for customers who want a home just right - not too big, and at the same time being a dream come true and aspiration for comfort and the luxury of a comfortable life. Despite appearances, the house has no difficult construction - it should be quite simple to build, and the energy-saving materials and technologies used will ensure inexpensive use of the building.

Rzuty:



Elewacje:



MG Projekt Pracownia Architektoniczna s.c. ul. Uczniowska 14 03-112 Warszawa
tel.: 22 676 66 83, 22 676 66 88, fax: 22 676 66 82, mob.: 600 392 884,
tylko przedstawiciele 606 200 136, www.mgprojekt.com.pl,
mgprojekt@mgprojekt.com.pl

MG Projekt