

### Dane techniczne:

Kubatura:	1225 m <sup>3</sup>
Powierzchnia zabudowy:	291 m <sup>2</sup>
Powierzchnia całkowita:	403.33 m <sup>2</sup>
Powierzchnia netto:	266.75 m <sup>2</sup>
Powierzchnia użytkowa:	253.71 m <sup>2</sup>
Wymiary domu:	20.7 x 24.12 m
Minimalne wymiary działki:	27.7 x 31.12 m
Wysokość do kalenicy:	7,36 m / 24,14 ft
Powierzchnia dachu:	415.38 m <sup>2</sup>
Kąt nachylenia dachu:	30 degrees

### Koszty realizacji:

Realizacja stanu surowego otwartego:	82 400
Realizacja stanu surowego zamkniętego:	129 840
Koszt robót wykończeniowych:	101 350
Realizacja domu pod klucz:	231 180

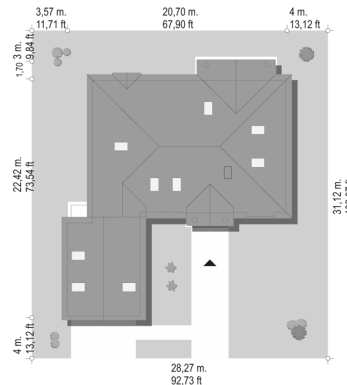
Koszty są podane w cenach netto, należy doliczyć podatek VAT

### Materiały:

- Foundations - concrete bench and foundation walls with concrete blocks
- External walls - brick walls - porotherm 25 blocks + polystyrene + thin-layer plaster
- Ceiling - monolithic reinforced concrete
- Elevation - thin-layer plaster on polystyrene
- Roof - ceramic tile



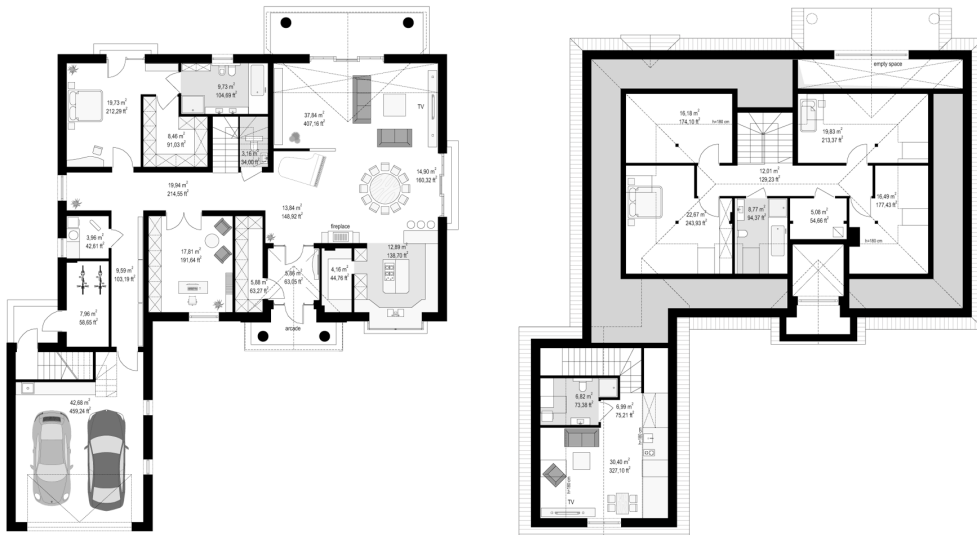
## CENA PROJEKTU: 2000.00 \$



	Energy-saving package	bezpł.
	Ventilation and fireplace package	90
	Central vacuum package	70
	The electronic version of the project	120
	Solar installation package	70
	Underfloor heating package	80
	Heat pump package	70
	Water jacket package	70
	Boiler for solid fuel package	80
	Air conditioning package	80
	Fencing projects	140
	Septic tanks sealed package	bezpł.

Park Residence 3 option D house plan is another house project from the collection of Park Residence houses. This time it is a project of Park Residence 3 option D. Although the design retains a similar style and details, it differs fundamentally from the base version. First of all, the building is narrowed, reduced, has an attic arranged, and besides it has an additional flat - servant's house for the housekeeper above the garage in the attic. The architecture of the house refers to the Polish manor house and the details of American residences. The front elevation is varied with a beautiful entrance arcade with columns and an arched window. The built-in garage part creates a side outbuilding, and the entire front is arranged in the letter L. From the garden side the house is decorated with a wide arcade over the terrace and a beautiful high arched window of the living room, opening the interior to the garden. A few words about the interior: On the ground floor there is an open living area connected to the dining room and hall. The living space opens with a wide elevated glazing for a large arcade, terrace and garden. A high window in the living room was used thanks to the emptiness above the living room, which opens the interior up to the ceiling. On the side at the spacious entrance hall we have a beautiful kitchen with a pantry. In the private part of the ground floor there is a part of your home: a bedroom with a bathroom and a dressing room, and a large study room - a library. In the commercial wing of the building, we have a two-garage comfortable garage, two utility rooms (including a laundry room), and a separate entrance and stairs to the attic above the garage with a separate apartment for the housekeeper. In the attic of the house, two comfortable bedrooms, a bathroom and an additional two attic or storage rooms have been designed. The house is a comfortable, representative villa for a family of 3-4 people. The compact body and well-thought-out design will ensure quick and effective construction, and the energy-saving materials and technologies used in the project will provide inexpensive costs for later maintenance of the house.

## Rzuty:



## Elewacje:

