

Dane techniczne:

Kubatura:	894 m ³
Powierzchnia zabudowy:	271.79 m ²
Powierzchnia całkowita:	318.39 m ²
Powierzchnia netto:	185.79 m ²
Powierzchnia użytkowa:	173.9 m ²
Wymiary domu:	26.61 x 14.82 m
Minimalne wymiary działki:	33.61 x 20.82 m
Wysokość do kalenicy:	6,81 m / 22,34 ft
Powierzchnia dachu:	396.32 m ²
Kąt nachylenia dachu:	30 degrees

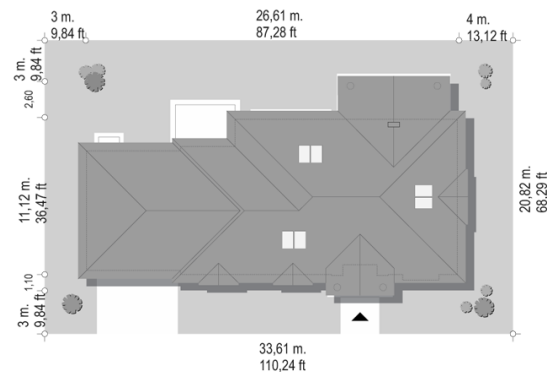
Koszty realizacji:

Realizacja stanu surowego otwartego:	69 850
Realizacja stanu surowego zamkniętego:	106 020
Koszt robót wykończeniowych:	99 220
Realizacja domu pod klucz:	205 230

Koszty są podane w cenach netto, należy doliczyć podatek VAT

Materiały:

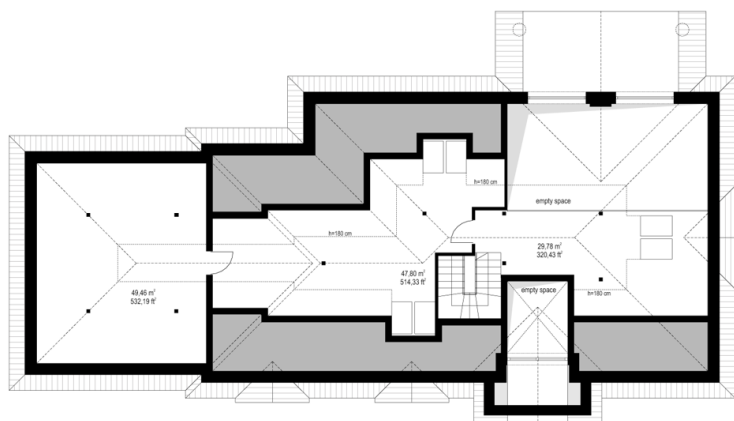
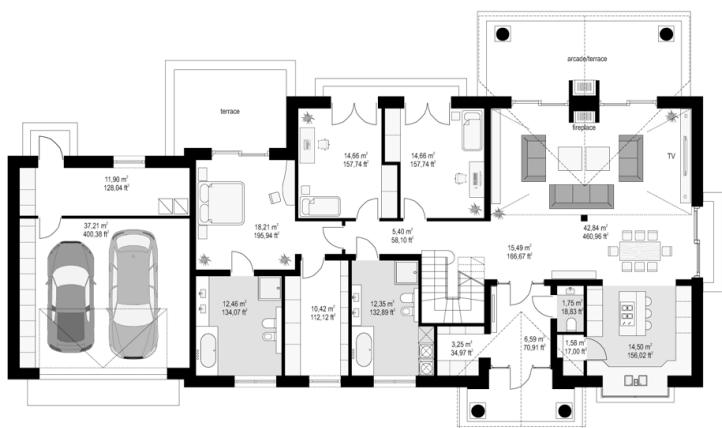
- Foundations - concrete bench and foundation walls with concrete blocks
- External walls - brick walls -porotherm 25 blocks + polystyrene + thin-layer plaster
- Ceiling - Monolithic
- Elevation - thin-layer plaster on polystyrene
- Roof - tile or metal roofing tile

**CENA PROJEKTU: 1680.00 \$**

	Energy-saving package bezpl.	
	Ventilation and fireplace package	90
	Central vacuum package	70
	The electronic version of the project	120
	Solar installation package	70
	Underfloor heating package	80
	Heat pump package	70
	Water jacket package	70
	Boiler for solid fuel package	80
	Air conditioning package	80
	Fencing projects	140
	Septic tanks sealed package	bezpl.

House plan Villa Pak C is a single family house plan from the popular series of Villa Park. The house was designed based on the investors' suggestions who liked the design of the Park Villa, but would like to have a garage on the side, not protruding from the front wall - either for aesthetic reasons, or because of a shallow plot. The building's body is currently oblong, it consists of a rectangular main residential part and an additional garage - economic one. Architecturally, the house refers to the Polish manor house and suburban American villas. The classic form and details harmonize here with modern materials, technologies and interior functionality. We enter the house through a beautiful arcade with columns and a solid door. The vestibule with a raised arched ceiling is the first attraction. Then we go to the open day space, with the emptiness above the living room and large raised glazed windows opening the living room to the terrace and garden. On the ground floor in the living area we have a comfortable kitchen with an island and pantry, a living room with a dining and seating area, and a hall with representative stairs upstairs. Next to it there are bedrooms that are accessible from the corridor: parents' apartment with its own bathroom and dressing room, as well as two children's bedrooms, a bathroom and a laundry room. The economic part of the house is separated from the rest of the interior, which is especially appreciated by clients who build outside the city. Above the ground floor is an attic, which can easily be converted into a usable attic. From the attic through the entresol we have a view of the living room below. The house is very comfortable. It is an ideal proposition for people who dream about comfortable living on the ground floor, on one floor, close to the garden. The building was designed as energy-saving, using modern materials and installations. The house does not have a difficult structure - it should be quite simple to build.

Rzuty:



Elewacje:

