

## Dane techniczne:

Kubatura:	1026 m <sup>3</sup>
Powierzchnia zabudowy:	254.32 m <sup>2</sup>
Powierzchnia całkowita:	334.89 m <sup>2</sup>
Powierzchnia netto:	171.97 m <sup>2</sup>
Powierzchnia użytkowa:	165.77 m <sup>2</sup>
Wymiary domu:	19.86 x 18.64 m
Minimalne wymiary działki:	27.86 x 25.64 m
Wysokość do kalenicy:	7,56 m / 24,80 ft
Powierzchnia dachu:	387.2 m <sup>2</sup>
Kąt nachylenia dachu:	35 degrees

## Koszty realizacji:

Realizacja stanu surowego otwartego:	70 790
Realizacja stanu surowego zamkniętego:	105 480
Koszt robót wykończeniowych:	106 220
Realizacja domu pod klucz:	211 700

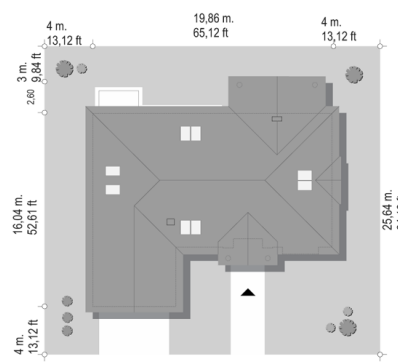
Koszty są podane w cenach netto, należy doliczyć podatek VAT

## Materiały:

- Foundations - concrete bench and foundation walls with concrete blocks
- External walls - brick walls -porotherm 25 blocks + polystyrene + thin-layer plaster
- Ceiling - monolithic
- Elevation - thin-layer plaster on polystyrene
- Roof - tile or metal roofing tile



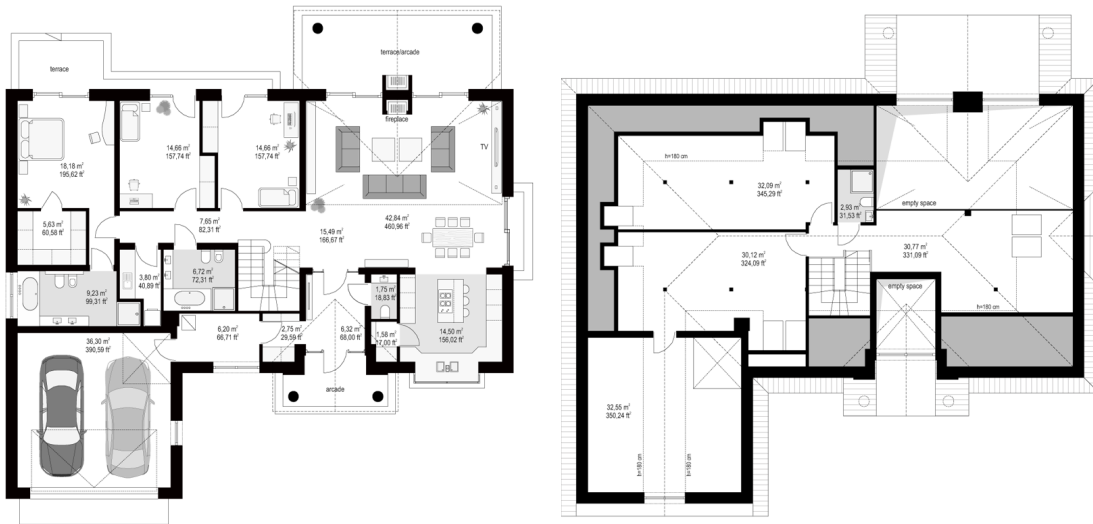
## CENA PROJEKTU: 1680.00 \$



	Energy-saving package	bezpł.
	Ventilation and fireplace package	90
	Central vacuum package	70
	The electronic version of the project	120
	Solar installation package	70
	Underfloor heating package	80
	Heat pump package	70
	Water jacket package	70
	Boiler for solid fuel package	80
	Air conditioning package	80
	Fencing projects	140
	Septic tanks sealed package	bezpł.

The house plan Villa Park 4 is another project from the popular series of houses "Villa Park - Park Residence". A one-storey house, with an attic, built on a rectangular block covered with a hipped roof, with a built-in garage part. The house was designed in reference to the traditional residential style, with details emphasizing the representative character, giving comfort and the impression of luxury. The architecture of the house is attractive, but also toned down and discreet. The house refers to tradition, but in a more modern contemporary perspective. The front of the house is decorated with a beautiful entrance portico, with side glazing of the entrance door and an arched window. The representative entrance door invites us to the interior of the villa. From the garden side the attraction is the large glazing from individual rooms, including the largest high glazing of the living room with emptiness, opening to the roofed terrace and garden. The interior of the ground floor of the building is functionally divided into three parts: the living part: the living room with a spacious opening on the mezzanine in the attic, the kitchen and hall, then the economic and garage part: with garage and boiler room available from the porch, and the night part consisting of three bedrooms on ground floor, and additional two rooms in the attic. Attic can be freely used or adapt. On the ground floor, we have two bathrooms and an additional toilet, and a laundry room next to the bedrooms. The parents' apartment has its own bathroom and a dressing room. In the attic, after adaptation, there is room for an additional bathroom. The house is functionally designed, practically, it has all the rooms needed for the functioning of the whole family. Thanks to the attic, there is an additional storage space. The building has a fairly simple construction, it should not be difficult to build. Thanks to the use of energy-saving materials and installations, the building will be cheap in later operation.

## Rzuty:



## Elewacje:



MG Projekt Pracownia Architektoniczna s.c. ul. Uczniowska 14 03-112 Warszawa  
tel.: 22 676 66 83, 22 676 66 88, fax: 22 676 66 82, mob.: 600 392 884,  
tylko przedstawiciele 606 200 136, [www.mgprojekt.com.pl](http://www.mgprojekt.com.pl),  
[mgprojekt@mgprojekt.com.pl](mailto:mgprojekt@mgprojekt.com.pl)

MG Projekt