

Dane techniczne:

Kubatura:	1026 m ³
Powierzchnia zabudowy:	254.32 m ²
Powierzchnia całkowita:	348.88 m ²
Powierzchnia netto:	179.8 m ²
Powierzchnia użytkowa:	173.6 m ²
Wymiary domu:	19.86 x 18.64 m
Minimalne wymiary działki:	27.86 x 25.54 m
Wysokość do kalenicy:	7,56 m / 24,80 ft
Powierzchnia dachu:	387.2 m ²
Kąt nachylenia dachu:	35 degrees

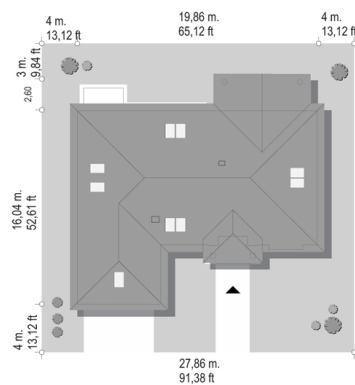
Koszty realizacji:

Realizacja stanu surowego otwartego:	79 370
Realizacja stanu surowego zamkniętego:	119 030
Koszt robót wykończeniowych:	85 610
Realizacja domu pod klucz:	204 640

Koszty są podane w cenach netto, należy doliczyć podatek VAT

Materiały:

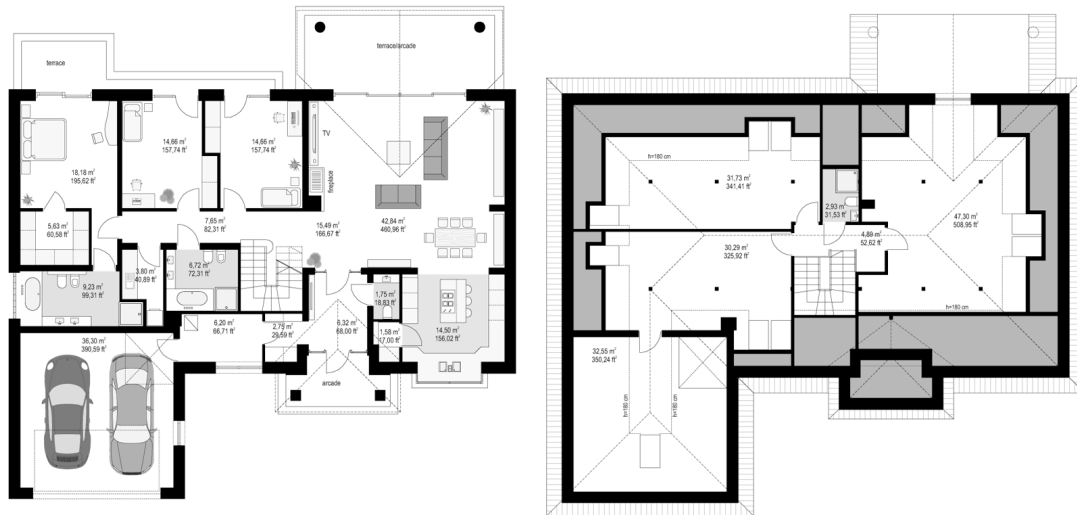
- Foundations - concrete bench and foundation walls with concrete blocks
- External walls - brick walls -porotherm 25 blocks + polystyrene + thin-layer plaster
- Ceiling - monolithic
- Elevation - thin-layer plaster on polystyrene
- Roof - tile or metal roofing tile

**CENA PROJEKTU: 1680.00 \$**

	Energy-saving package	bezpł.
	Ventilation and fireplace package	90
	Central vacuum package	70
	The electronic version of the project	120
	Solar installation package	70
	Underfloor heating package	80
	Heat pump package	70
	Water jacket package	70
	Boiler for solid fuel package	80
	Air conditioning package	80
	Fencing projects	140
	Septic tanks sealed package	bezpł.

The house plan Villa Park 5 is another project from the popular series of houses "Villa Park - Park Residence". A one-storey house, with an attic, built on a rectangular block covered with a hipped roof, with a built-in garage part. The house was designed in reference to the traditional residential style, with details emphasizing the representative character, giving comfort and the impression of luxury. The architecture of the house is attractive, but also toned down and discreet. The house refers to tradition, but in a more modern contemporary perspective. The front of the house is decorated with a beautiful entrance portico, with side glazing of the entrance door and an arched window. The representative entrance door invites us to the interior of the villa. From the garden side, large glazing of individual rooms - including the largest wide glazed living room, open to the terrace and garden. The interior of the ground floor is functionally divided into three parts: daily part: living room with dining room, kitchen and hall, next to the utility and garage part: garage and boiler room available from the vestibule, and the night part consisting of three bedrooms on the ground floor, and attic with up to three additional rooms upstairs. Attic can be freely used or adapt. On the ground floor, we have two bathrooms and an additional toilet, and a laundry room next to the bedrooms. The parents' apartment has its own bathroom and a dressing room. The house is functionally designed, practically, it has all the rooms needed for the functioning of the whole family. Thanks to the attic, we have space for additional use. The building has a simple construction, it is not difficult to build. Thanks to the use of energy-saving materials and installations, the building will be inexpensive to operate.

Rzuty:



Elewacje:

