

Dane techniczne:

Kubatura:	783 m ³
Powierzchnia zabudowy:	202.87 m ²
Powierzchnia całkowita:	202.87 m ²
Powierzchnia netto:	128.15 m ²
Powierzchnia użytkowa:	122.67 m ²
Wymiary domu:	16.43 x 17.18 m
Minimalne wymiary działki:	24.43 x 24.18 m
Wysokość do kalenicy:	6,53 m / 21,42 ft
Powierzchnia dachu:	291.85 m ²
Kąt nachylenia dachu:	25 degrees

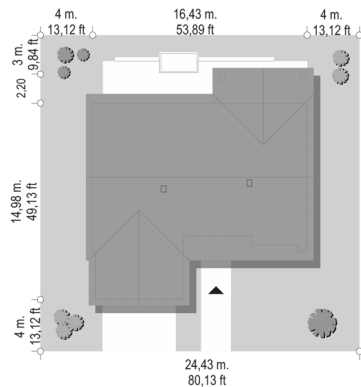
Koszty realizacji:

Realizacja stanu surowego otwartego:	46 720
Realizacja stanu surowego zamkniętego:	62 460
Koszt robót wykończeniowych:	69 770
Realizacja domu pod klucz:	132 230

Koszty są podane w cenach netto, należy doliczyć podatek VAT

Materiały:

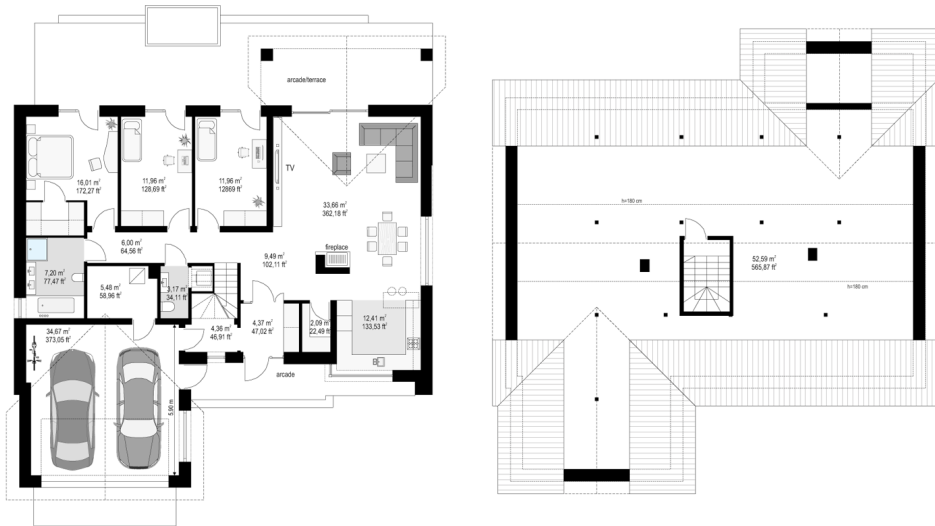
- Foundations - concrete bench and foundation walls with concrete blocks
- External walls - brick walls -porotherm 25 blocks + polystyrene + thin-layer plaster
- Ceiling - monolithic
- Elevation - thin-layer plaster on polystyrene
- Roof - ceramic tile

**CENA PROJEKTU: 1110.00 \$**

	Energy-saving package	bezpł.
	Ventilation and fireplace package	90
	Central vacuum package	70
	The electronic version of the project	120
	Solar installation package	70
	Underfloor heating package	80
	Heat pump package	70
	Water jacket package	70
	Boiler for solid fuel package	80
	Air conditioning package	80
	Fencing projects	140
	Septic tanks sealed package	bezpł.

One-storeyed 4 house plan is another proposal from the series of very popular One-storeyed projects from our studio. This time it is a house with a gable roof, simple to build and with a simple shape. A simple block - interesting details, materials, nice glazing that open the interior to the garden create a very attractive single-family house. The whole house is covered with a rectangular gable roof with an inclination of 25 degrees, covering a small attic, which is an additional space in the house - a warehouse. Home interior: all functions are on one level, on the ground floor. From a nice vestibule, we go to the lobby and to the living room, dining room and kitchen. The kitchen with a corner window opens to the front of the house. There is a pantry next to the kitchen. From the living room we have two large windows - from the dining room to the garden, and sliding balcony doors - to the terrace and a beautiful arcade. From the hall we pass the corridor to the night part with bedrooms. There are bedrooms here: parents with a wardrobe, and two children's rooms with built-in wardrobes. All rooms have exit to the terrace. In addition, a bathroom was designed, as well as a toilet with a corner for a washing machine and a dryer. From the entrance hall we have to go through the cloakroom to the double garage and boiler room. We enter the attic by stairs accessible from the lobby. Attic is more than 60 m² of additional space. It can be a warehouse, or you can use this area as a usable attic over time - just add a few windows and already! One-storeyed 4 house has been designed in a simple, easy to build solid. The house has a compact plan, it will be cheap in heating and cheap in later operation. The materials and solutions used are energy-saving. One-storeyed 3 house is a perfect proposition for investors who want to get the maximum effect from the money they have invested. If you want a nice, but also practical and functional apartment for yourself and your family this house will be perfect for you.

Rzuty:



Elewacje:

