

## Dane techniczne:

Kubatura:	942 m <sup>3</sup>
Powierzchnia zabudowy:	222.88 m <sup>2</sup>
Powierzchnia całkowita:	222.88 m <sup>2</sup>
Powierzchnia netto:	144.5 m <sup>2</sup>
Powierzchnia użytkowa:	137.23 m <sup>2</sup>
Wymiary domu:	11.84 x 22.36 m
Minimalne wymiary działki:	18.84 x 30.36 m
Wysokość do kalenicy:	6,39 m / 20,96 ft
Powierzchnia dachu:	329.8 m <sup>2</sup>
Kąt nachylenia dachu:	30 degrees

## Koszty realizacji:

Realizacja stanu surowego otwartego:	52 010
Realizacja stanu surowego zamkniętego:	78 020
Koszt robót wykończeniowych:	69 900
Realizacja domu pod klucz:	147 910

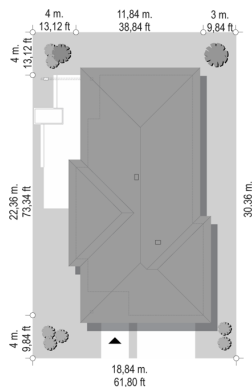
Koszty są podane w cenach netto, należy doliczyć podatek VAT

## Materiały:

- Foundations - concrete bench and foundation walls with concrete blocks
- External walls - brick walls - porotherm 25 blocks + polystyrene + thin-layer plaster
- Ceiling - monolithic reinforced concrete
- Elevation - thin-layer plaster on polystyrene
- Roof - ceramic tile



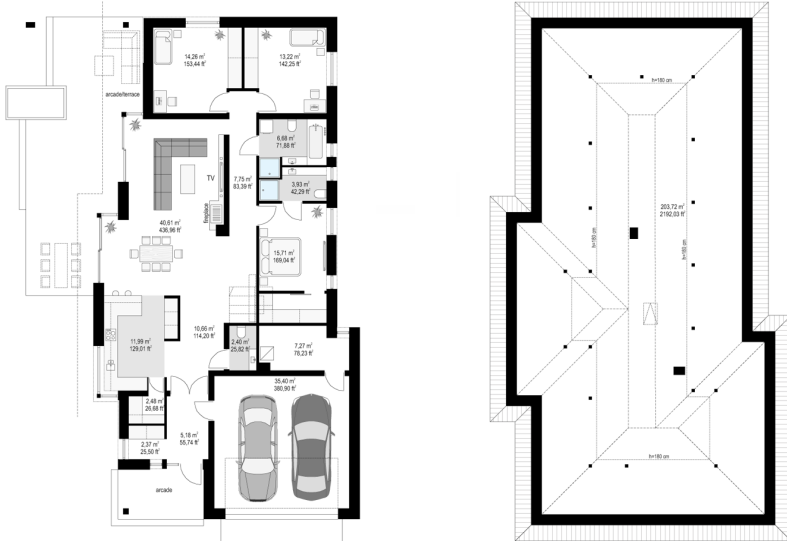
## CENA PROJEKTU: 1170.00 \$



	Energy-saving package	bezpł.
	Ventilation and fireplace package	90
	Central vacuum package	70
	The electronic version of the project	120
	Solar installation package	70
	Underfloor heating package	80
	Heat pump package	70
	Water jacket package	70
	Boiler for solid fuel package	80
	Air conditioning package	80
	Fencing projects	140
	Septic tanks sealed package	bezpł.

Narrow house plan is a single family, perfect for a 4-5-person, one-storied house intended for a narrow plot, or a plot of land with a garden on the side - due to the setting towards the sun. The house has a fairly simple shape, organized on a rectangular plan, covered with a hipped roof with small additions. The architecture of the house is modern. Thanks to the large glazing, an attractive building was obtained. The entrance to the house was accented by an arcade and a representative entrance door. The side and rear façades, in turn, have the largest glazing from the living area, making the terrace an ideal extension of the living room. A massive roof over the entire ground floor gives the building style and elegance. Details such as the corner longitudinal kitchen window designed between kitchen cabinets underline the modern style. We enter the house through a spacious arcade to a comfortable entrance hall with a cloakroom, so that we can get to the open, large living space of the interconnected rooms of the hall, living room, dining room and kitchen. The kitchen with the pantry is partially separated from the rest of the house by a wall with buildings. In the living room we have a television and fireplace wall with a central three-sided fireplace and beautiful glazing that opens the interior to the terrace. Going deeper inside, there is a corridor from which we divide into three bedrooms, including two children's bedrooms with built-in wardrobes and a bathroom, and a separate parents' suite with their own bathroom and dressing room. From the vestibule, we go to the garage and economy part, with a double garage and a large boiler room. The house is very comfortable on the ground floor, and you can still use the attic in it, by making stairs, which are alternatively provided from the hall by the toilet. The attic is a reserve of an additional about 40 m<sup>2</sup>, which can be used as an attic - a warehouse, and it can also be adapted to an additional living space - for example with extra two rooms. Narrow is a project of a comfortable single-family home, with enough space for a comfortable apartment, suitable primarily for a narrow plot, or a plot with limited front elevation. The building is energy-saving, quite simple to build. It should not be expensive to implement or to retain later

Rzuty:



Elewacje:

