

## Dane techniczne:

Kubatura:	551 m <sup>3</sup>
Powierzchnia zabudowy:	139.57 m <sup>2</sup>
Powierzchnia całkowita:	139.57 m <sup>2</sup>
Powierzchnia netto:	87.48 m <sup>2</sup>
Powierzchnia użytkowa:	82.43 m <sup>2</sup>
Wymiary domu:	14.1 x 11.76 m
Minimalne wymiary działki:	21.1 x 19.76 m
Wysokość do kalenicy:	6,39 m / 20,96 ft
Powierzchnia dachu:	201.13 m <sup>2</sup>
Kąt nachylenia dachu:	30 degrees

## Koszty realizacji:

Realizacja stanu surowego otwartego:	31 540
Realizacja stanu surowego zamkniętego:	48 270
Koszt robót wykończeniowych:	54 420
Realizacja domu pod klucz:	102 690

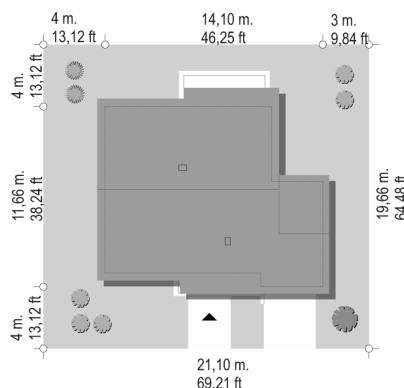
Koszty są podane w cenach netto, należy doliczyć podatek VAT

## Materiały:

- Foundations - concrete bench and foundation walls with concrete blocks
- External walls - brick walls - aerated 24 blocks + polystyrene + thin-layer plaster
- Ceiling - monolithic reinforced concrete
- Elevation - thin-layer plaster on polystyrene
- Roof - ceramic tile



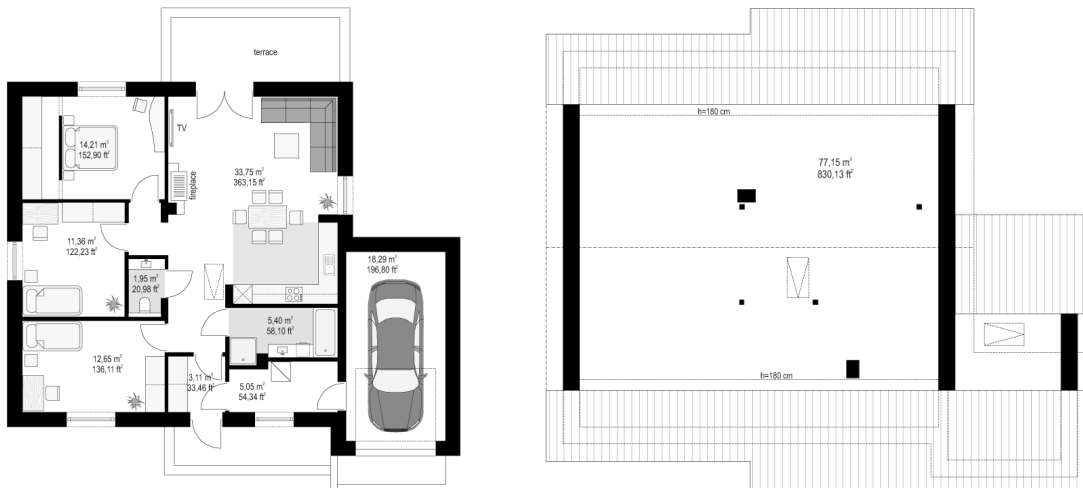
## CENA PROJEKTU: 1020.00 \$



	Energy-saving package	bezpł.
	Ventilation and fireplace package	90
	Central vacuum package	70
	The electronic version of the project	120
	Solar installation package	70
	Underfloor heating package	80
	Heat pump package	70
	Water jacket package	70
	Boiler for solid fuel package	80
	Air conditioning package	80
	Fencing projects	140
	Septic tanks sealed package	bezpł.

Sophie 8 house plan is another project from the series Sophie houses - an enlarged version compared to the base project, built on a square plan with dimensions of 10.7 x 10.7 m, with an additional garage. The house has a simple shape and structure, and peaceful unpretentious architecture. Thanks to its simplicity, the building is easy to build and therefore inexpensive. At the same time, it meets the requirements of a comfortable flat for a family of four. The house is crowned with a gable roof with an angle of 30 degrees. Above the ground floor there is a wooden beam ceiling and rafter roof truss, which creates a large attic space, which we get by ladder stairs. We enter the house through the vestibule with a large wardrobe to the lobby and living room. On the side at the entrance, we go to the boiler room and then to the garage. The boiler room was designed as gas, but it can easily be converted into a solid fuel boiler. We have a bathroom and then a living space with a living room and kitchenette - a total area of about 35 m<sup>2</sup>. On the left we have three bedrooms, including a parents' bedroom with a dressing room. From the living room we get out to the garden and the terrace. Attic over the ground floor can be redesigned to the attic, adding stairs to the top. The house is very functional and has an extensive program of rooms. There is no wasted space here - everything is practically used. The house has an unpretentious and pleasing to the eye style. The decisive advantage of the Sophie series houses is their simplicity and functionality, translating into the maximum investment effect obtained for little money. Each subsequent version of the house from this series we try to design even better and more sensibly. The house is designed as energy-saving, very well insulated. It will be cheap in later exploitation

## Rzuty:



## Elewacje:

