

## Dane techniczne:

Kubatura:	491 m <sup>3</sup>
Powierzchnia zabudowy:	115.78 m <sup>2</sup>
Powierzchnia całkowita:	115.78 m <sup>2</sup>
Powierzchnia netto:	91.85 m <sup>2</sup>
Powierzchnia użytkowa:	87.47 m <sup>2</sup>
Wymiary domu:	10.76 x 10.76 m
Minimalne wymiary działki:	18.76 x 18.76 m
Wysokość do kalenicy:	6,39 m / 20,96 ft
Powierzchnia dachu:	166 m <sup>2</sup>
Kąt nachylenia dachu:	30 degrees

## Koszty realizacji:

Realizacja stanu surowego otwartego:	24 890
Realizacja stanu surowego zamkniętego:	38 890
Koszt robót wykończeniowych:	46 360
Realizacja domu pod klucz:	85 250

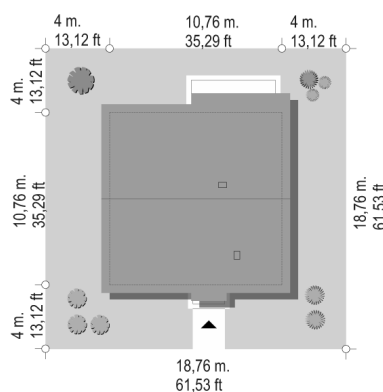
Koszty są podane w cenach netto, należy doliczyć podatek VAT

## Materiały:

- Foundations - concrete bench and foundation walls with concrete blocks
- External walls - brick walls - aerated 24 blocks + polystyrene + thin-layer plaster
- Ceiling - monolithic reinforced concrete
- Elevation - thin-layer plaster on polystyrene
- Roof - ceramic tile



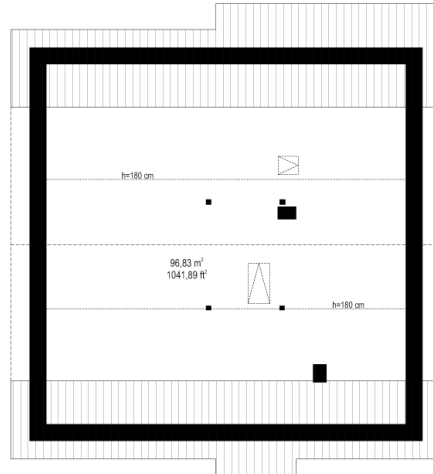
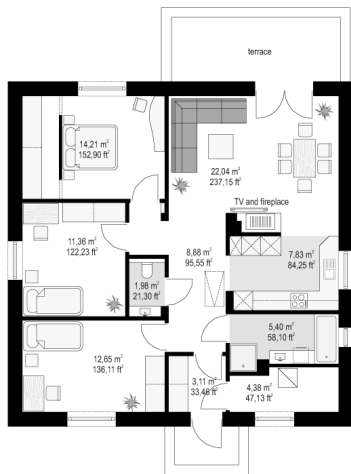
## CENA PROJEKTU: 1020.00 \$



	Energy-saving package	bezpł.
	Ventilation and fireplace package	90
	Central vacuum package	70
	The electronic version of the project	120
	Solar installation package	70
	Underfloor heating package	80
	Heat pump package	70
	Water jacket package	70
	Boiler for solid fuel package	80
	Air conditioning package	80
	Fencing projects	140
	Septic tanks sealed package	bezpł.

Sophie 5 house plan is another variant version of the popular series of houses Sophie. Sophie 5 house plan is a slightly larger version of the original project. Its external dimensions are square: 10.7 x 10.7 meters. Thanks to this, the interior is more spacious - more comfortable. The house has a simple construction and uncomplicated shape. Thanks to its cost-effective form and its simplicity, it is easy to build and therefore inexpensive. At the same time, thanks to the functionally laid out interior it is comfortable. Sophie 5 slightly larger than the base project - has a usable area of 87 m<sup>2</sup>. The house is covered with a gable roof with an angle of 30 degrees. Above the ground floor there is a wooden beam ceiling and a rafter roof truss. Thanks to this above the ground floor, we still have a large storage space for the attic to use. Attic can also be adapted to an additional attic by modifying the design. Alternatively, instead of a rafter roof, a roof structure can be made of truss girders. We enter the house through the vestibule with a large wardrobe to the lobby and the living room. On the side of the vestibule is a boiler room - in the base design with a gas boiler, but it can be easily adapted to a solid fuel boiler. Beside the boiler room there is a bathroom, on the other side there are three bedrooms, including a parents' bedroom with a dressing room. From the garden side, we have a living space, a living room with seating furniture and a dining table, and a kitchen separated from the living room by a fireplace and TV wall. The house - taking into account a small usable area - is very functional and has an extensive program of rooms. There is no wasted space here - everything is logically and practically managed. The house has a very pleasant and unpretentious style. The style of the house is pleasing to the eye. The building will be very well composed both with the surroundings of buildings in the suburbs, as well as in the countryside, among loosely built-up buildings. The decisive advantage of the Sophie series houses is their simplicity and functionality, translating into the maximum investment effect obtained for little money. Each subsequent version of the house from this series we try to design even better and more sensibly. The house is designed as energy-saving, very well insulated. It will be cheap in later exploitation.

## Rzuty:



## Elewacje:

