

Dane techniczne:

Kubatura:	432 m ³
Powierzchnia zabudowy:	103.34 m ²
Powierzchnia całkowita:	137.85 m ²
Powierzchnia netto:	110.48 m ²
Powierzchnia użytkowa:	110.48 m ²
Wymiary domu:	12.8 x 8.34 m
Minimalne wymiary działki:	20.8 x 16.34 m
Wysokość do kalenicy:	6,94 m / 22,76 ft
Powierzchnia dachu:	173 m ²
Kąt nachylenia dachu:	38 degrees

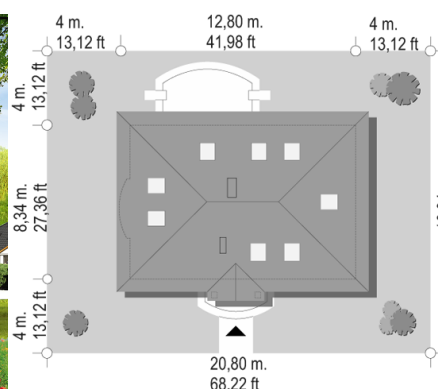
Koszty realizacji:

Realizacja stanu surowego otwartego:	28 100
Realizacja stanu surowego zamkniętego:	40 400
Koszt robót wykończeniowych:	44 000
Realizacja domu pod klucz:	84 300

Koszty są podane w cenach netto, należy doliczyć podatek VAT

Materiały:

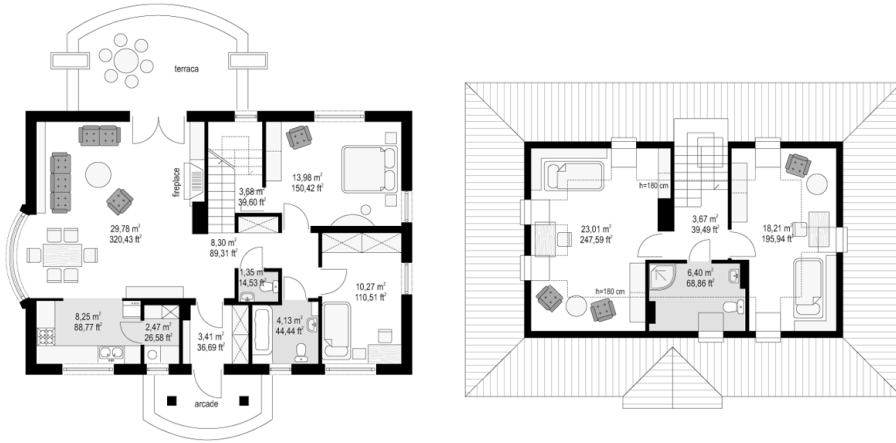
- Foundations - poured concrete
- Exterior walls - aerated concrete or ceramic airbricks + styrofoam
- Ceiling - reinforced concrete Teriva
- Elevations: thin-layer plaster
- Roofing - Ceramic tile or metal tile

**CENA PROJEKTU: 870.00 \$**

	Energy-saving package	bezpł.
	Ventilation and fireplace package	90
	Central vacuum package	70
	The electronic version of the project	120
	Solar installation package	70
	Underfloor heating package	80
	Heat pump package	70
	Water jacket package	70
	Boiler for solid fuel package	80
	Air conditioning package	80
	Fencing projects	140
	Septic tanks sealed package	bezpł.

Gargamel house plan is a detached house referring to the form and style of Polish manor. Inside hides a modern interior layout for a family of 4 - 5 people. The building has a hipped roof, front entrance with columns and plinth with rustication expanding downward give the block of house seriousness and reliability. The interior of Gargamel's house create a comfortable living room with a terrace, a dining room with nice bay window partly open kitchen with a very useful utility room, and in the second wing of the house two rooms with bathroom and dressing room. On the top floor there are two bedrooms with bathrooms. The attic can be finished in the second stage of construction. Gargamel's house plan is also available in mirror version.

Rzuty:



Elewacje:

