

Dane techniczne:

Kubatura:	916 m ³
Powierzchnia zabudowy:	221.61 m ²
Powierzchnia całkowita:	221.61 m ²
Powierzchnia netto:	140.72 m ²
Powierzchnia użytkowa:	135.75 m ²
Wymiary domu:	17.75 x 16.84 m
Minimalne wymiary działki:	24.75 x 24.84 m
Wysokość do kalenicy:	6,26 m / 20,53 ft
Powierzchnia dachu:	316.5 m ²
Kąt nachylenia dachu:	30 degrees

Koszty realizacji:

Realizacja stanu surowego otwartego:	49 000
Realizacja stanu surowego zamkniętego:	70 120
Koszt robót wykończeniowych:	78 660
Realizacja domu pod klucz:	148 770

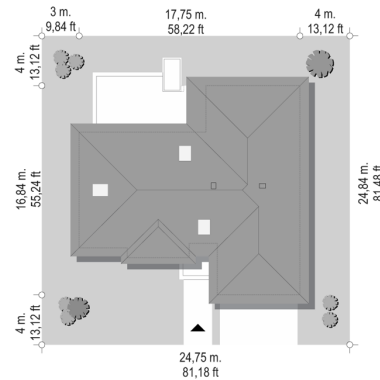
Koszty są podane w cenach netto, należy doliczyć podatek VAT

Materiały:

- Foundations - concrete bench and foundation walls with concrete blocks
- External walls - brick walls - porotherm 25 blocks + polystyrene + thin-layer plaster
- Ceiling - monolithic reinforced concrete
- Elevation - thin-layer plaster on polystyrene
- Roof - ceramic tile



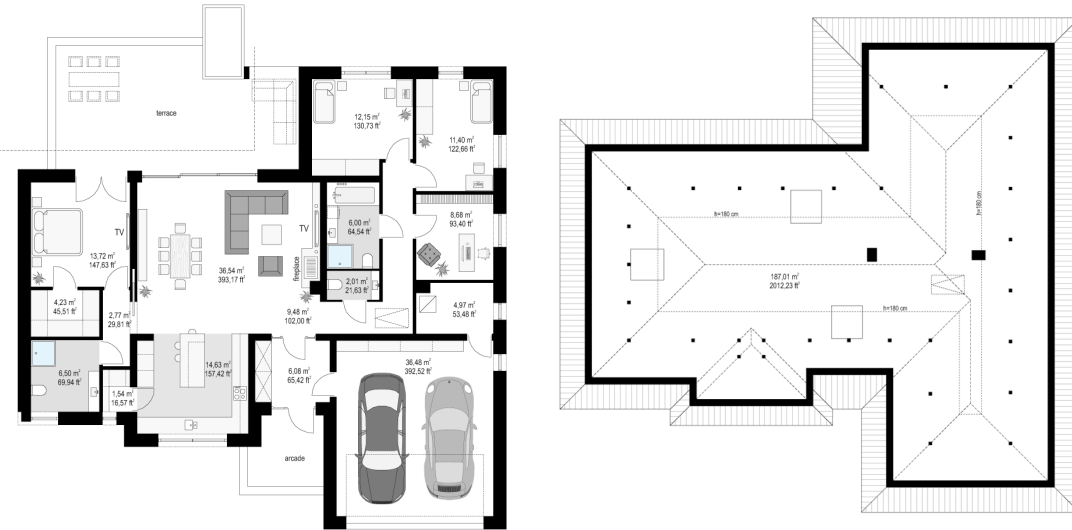
CENA PROJEKTU: 1210.00 \$



	Energy-saving package	bezpł.
	Ventilation and fireplace package	90
	Central vacuum package	70
	The electronic version of the project	120
	Solar installation package	70
	Underfloor heating package	80
	Heat pump package	70
	Boiler for solid fuel package	80
	Air conditioning package	80
	Fencing projects	140
	Septic tanks sealed package	bezpł.

The ground floor villa 2 is a slightly smaller version of Ground floor villa house plan, ideal for investors planning to build a house with a usable area of up to 140 sq m + garage. The project is designed for a family of 4- 5 people. The house is one-storey, built on the T-plane plan, covered with a hipped roof, with extensions over the garage and bedrooms. The architecture of the building is modern and at the same time restrained in form and logical. Levels of elevation and large glazing combined with inserts of contrasting plaster and wooden (or imitating wood) coverings make the house look more attractive. We enter the interior with a beautiful entrance door with a light source - to the vestibule and immediately to the central living area with living room and kitchen, and from there to the sides to separate parents, and parts with children's bedrooms. Living room with a fireplace and TV wall, a place for comfortable rest and a large dining table is connected spatially with the kitchen with the island and pantry. The living room is lit both from the garden side - wide glass doors to the terrace, and indirectly from the front of the house - through a large kitchen window. On the side of the living area we have a parents' apartment, with a bedroom with access to the terrace, and a bathroom and a dressing room. On the other side of the house we have three rooms - children's bedrooms and a bathroom. We get to the double garage and the boiler room from the vestibule. The house plan is very simple and logical, and at the same time original, breaking the usual interior design. Above the ground floor there is a non-usable attic, which can of course be adapted to an additional usable space after minor modifications. The house is a great proposition for investors planning to build a modern, not too big, but comfortable single-family home. Ground floor, where you live comfortably on one floor, having direct contact with the garden, surroundings, terraces. The building has a simple structure, it is energy-saving. It will be easy to build and inexpensive in later operation.

Rzuty:



Elewacje:

