

Dane techniczne:

Kubatura:	985 m ³
Powierzchnia zabudowy:	206.87 m ²
Powierzchnia całkowita:	255.78 m ²
Powierzchnia netto:	129.21 m ²
Powierzchnia użytkowa:	123.72 m ²
Wymiary domu:	19.5 x 12.4 m
Minimalne wymiary działki:	26.5 x 20.4 m
Wysokość do kalenicy:	6,57 m / 21,55 ft
Powierzchnia dachu:	276.5 m ²
Kąt nachylenia dachu:	30 degrees

Koszty realizacji:

Realizacja stanu surowego otwartego:	51 570
Realizacja stanu surowego zamkniętego:	76 970
Koszt robót wykończeniowych:	75 320
Realizacja domu pod klucz:	152 280

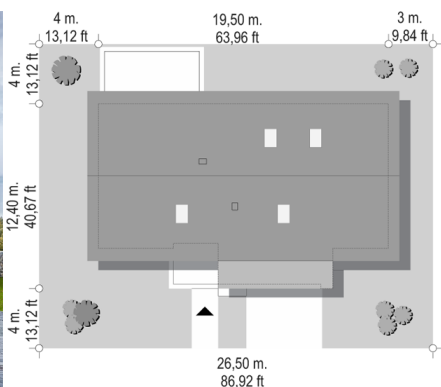
Koszty są podane w cenach netto, należy doliczyć podatek VAT

Materiały:

- Foundations - concrete bench and foundation walls with concrete blocks
- External walls - brick walls - aerated 24 blocks + polystyrene + thin-layer plaster
- Ceiling - monolithic reinforced concrete
- Elevation - thin-layer plaster on polystyrene
- Roof - ceramic tile



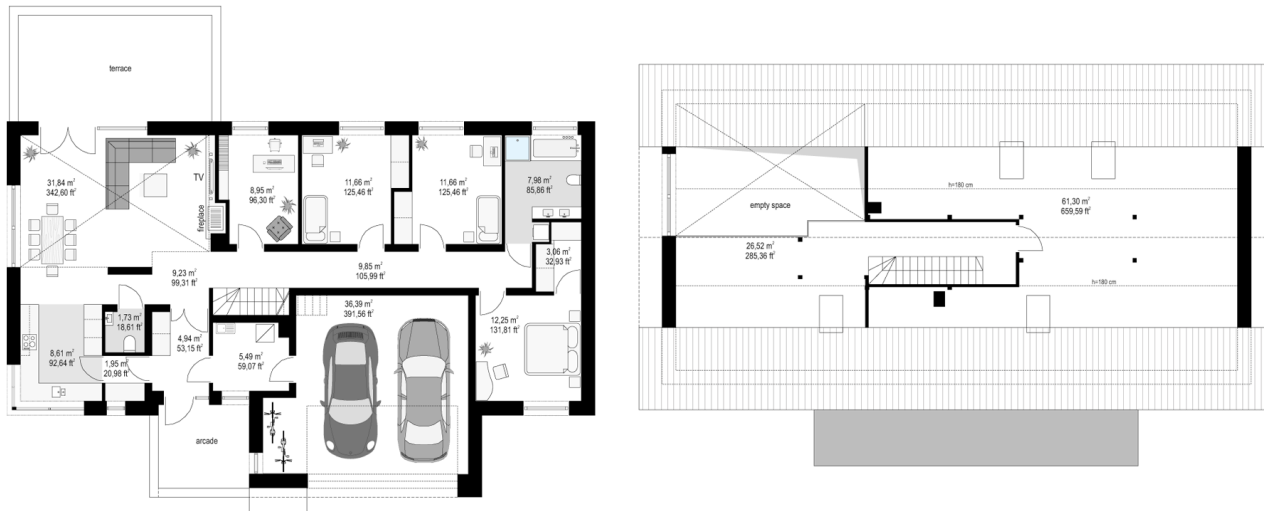
CENA PROJEKTU: 1170.00 \$



	Energy-saving package	bezp.
	Ventilation and fireplace package	90
	Central vacuum package	70
	The electronic version of the project	120
	Solar installation package	70
	Underfloor heating package	80
	Heat pump package	70
	Water jacket package	70
	Boiler for solid fuel package	80
	Air conditioning package	80
	Fencing projects	140

Dream 5 house plan or another project from a series of Dream houses from our studio. The building is one-storey with an attic for development, built on a rectangular plan, with a garage part protruding on the front, covered with a gable roof with a slope of 30 degrees. The design has a modern style and combines a traditional shape with modern finishing materials and details. The combination of plastered wall fragments with cladding imitating concrete, as well as gray or graphite tiles give the elegant and representative appearance of the building. The main stylistic details are: a protruding garage, an entrance gate and a representative front door with transoms. In the top and at the back of the house, the living room is decorated with large glazed windows that open the interior to the surrounding garden. Interior: the original location of the garage, in the central part of the block, facilitates communication between the garage, vestibule and boiler room, which is rare in one-story houses with a rectangular shape. The garage is in a perfect place - at the entrance, near the lobby, kitchen and pantry. From the vestibule, we enter the lobby and straight into the living room. The living room is illuminated from two sides - from the garden with wide terrace doors, and from the top of the building with a raised window with a light letting in a lot of light and being an attraction of the day space. An additional attraction is of course the emptiness above the living room with a mezzanine in the attic. On the other side of the house we have four rooms, a bathroom and a wardrobe. Above the ground floor is designed attic, with mezzanine above the living room enlarging its space, and an additional attic space, which can remain a non-usable attic (home storage), or it can be developed into utility rooms - according to the wishes and needs of the owners. Dream 5 house plan is a comfortable, comfortable and modern villa for a family of four to six - functional and practical. The building is energy-saving, has a simple construction, will be easy to build and cheap to maintain.!

Rzuty:



Elewacje:

