

Dane techniczne:

Kubatura:	989 m ³
Powierzchnia zabudowy:	207.35 m ²
Powierzchnia całkowita:	252.81 m ²
Powierzchnia netto:	132.65 m ²
Powierzchnia użytkowa:	127.02 m ²
Wymiary domu:	23 x 13.05 m
Minimalne wymiary działki:	29 x 21.05 m
Wysokość do kalenicy:	6,78 m / 22,24 ft
Powierzchnia dachu:	231.42 m ²
Kąt nachylenia dachu:	35 degrees

Koszty realizacji:

Realizacja stanu surowego otwartego:	51 770
Realizacja stanu surowego zamkniętego:	75 830
Koszt robót wykończeniowych:	76 610
Realizacja domu pod klucz:	152 430

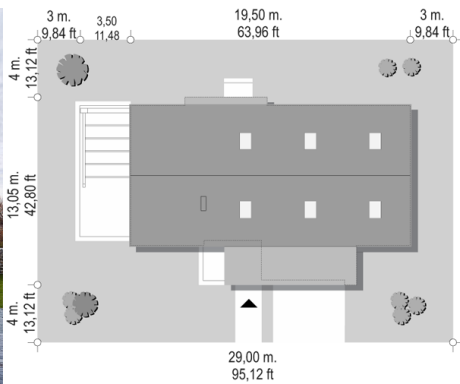
Koszty są podane w cenach netto, należy doliczyć podatek VAT

Materiały:

- Foundations - concrete bench and foundation walls with concrete blocks
- External walls - brick walls - aerated 24 blocks + polystyrene + thin-layer plaster
- Ceiling - monolithic reinforced concrete
- Elevation - thin-layer plaster on polystyrene
- Roof - sheet metal seam (or tile)



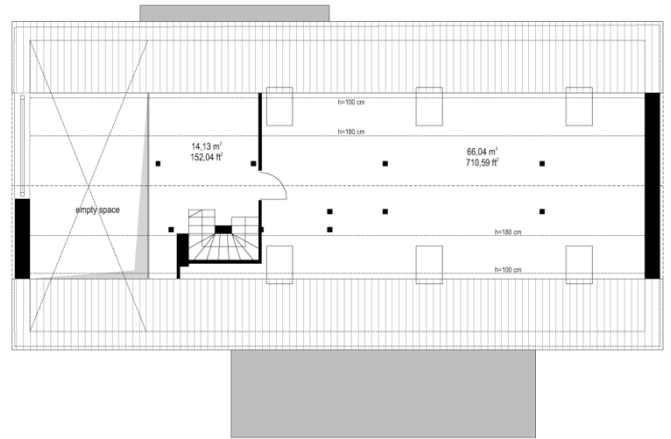
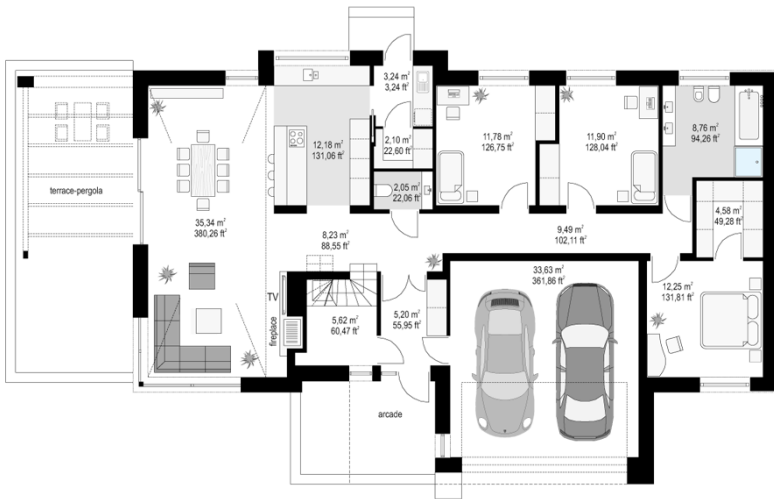
CENA PROJEKTU: 1170.00 \$



	Energy-saving package	bezpł.
	Ventilation and fireplace package	90
	Central vacuum package	70
	The electronic version of the project	120
	Solar installation package	70
	Underfloor heating package	80
	Heat pump package	70
	Water jacket package	70
	Boiler for solid fuel package	80
	Air conditioning package	80
	Fencing projects	140

Dream 4 house plan is another proposal from a series of Dream 4 houses - a one-storey building with an attic for development, built on a rectangular plan, with a garage part protruding on the front, covered with a gable roof with a 35-degree angle of inclination. The project is maintained in a modern style of a house-barn, more and more often chosen by investors. The roof of the building has no hoods, the roofing is designed from standing seam sheet, and the external walls are finished with a vertical cladding of wooden squared timber. This combination of materials, combined with the surfaces of concrete imitating panels, and grey window frames creates a very attractive appearance of the building. The main stylistic details are: a protruding garage, an entrance gate and a representative front door with transoms. At the top of the house, in turn, a two-storey window of the living room and a terrace partially covered with a pergola. Thanks to the location of the terrace on the side of the building, the house is perfect even for a plot with entry from the south. The living room in Dream 4 house plan is illuminated on three sides, so the building can be located on a plot with a garden on the side or back, or even from the front of the house, in the corner of the plot. Interior: the original location of the garage, in the central part of the block, facilitates communication between the garage, vestibule and boiler room, which is rare in one-story houses with a rectangular shape. The garage is in a perfect place - at the entrance, close to the hall and the kitchen. The boiler room next to the living room and the fireplace makes us have one common chimney in the whole building. From the vestibule, we enter the lobby and the living area of the interconnected rooms of the dining room and kitchen. The kitchen is separated from the dining room by a peninsula with a barge. From the kitchen we have access to the pantry, laundry and business exit to the back of the house. The living room is lit from each side, and opening the ceiling above the living room increases its height creating an attractive space with a mezzanine in the attic. On the other side of the house we have three bedrooms, a bathroom and a dressing room. Above the ground floor is designed attic, with a mezzanine above the living room enlarging its space and with an additional attic space that can remain a non-usable attic (home storage), or it can be developed into utility rooms - according to the wishes and needs of the owners. Dream 4 house plan is a comfortable, comfortable and modern villa for a family of four - functional and practical. The building is energy-saving, has a simple construction, will be easy to build and cheap to maintain.

Rzuty:



Elewacje:

