

## Dane techniczne:

Kubatura:	931 m <sup>3</sup>
Powierzchnia zabudowy:	207.35 m <sup>2</sup>
Powierzchnia całkowita:	207.35 m <sup>2</sup>
Powierzchnia netto:	132.73 m <sup>2</sup>
Powierzchnia użytkowa:	127.1 m <sup>2</sup>
Wymiary domu:	23 x 13.05 m
Minimalne wymiary działki:	29 x 21.05 m
Wysokość do kalenicy:	6,48 m / 21,25 ft
Powierzchnia dachu:	323 m <sup>2</sup>
Kąt nachylenia dachu:	30 degrees

## Koszty realizacji:

Realizacja stanu surowego otwartego:	54 770
Realizacja stanu surowego zamkniętego:	79 490
Koszt robót wykończeniowych:	72 920
Realizacja domu pod klucz:	152 400

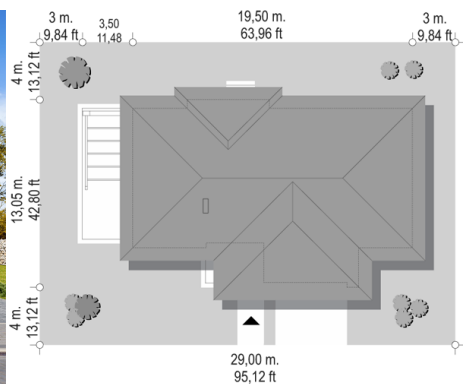
Koszty są podane w cenach netto, należy doliczyć podatek VAT

## Materiały:

- Foundations - concrete bench and foundation walls with concrete blocks
- External walls - brick walls - aerated 24 blocks + polystyrene + thin-layer plaster
- Ceiling - monolithic reinforced concrete
- Elevation - thin-layer plaster on polystyrene
- Roof - ceramic tile



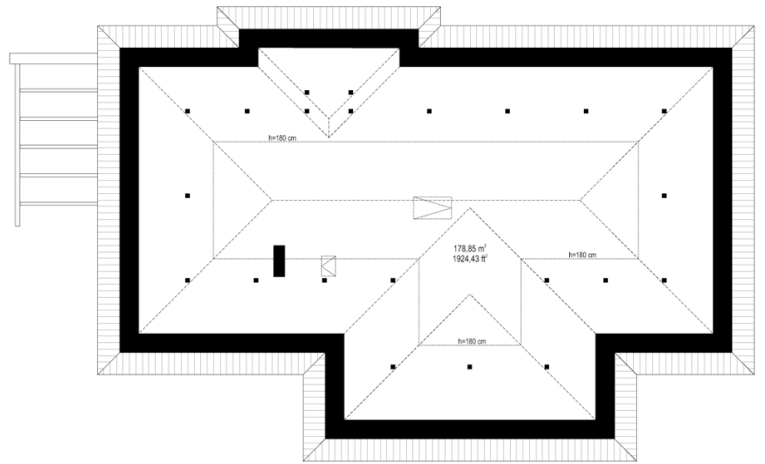
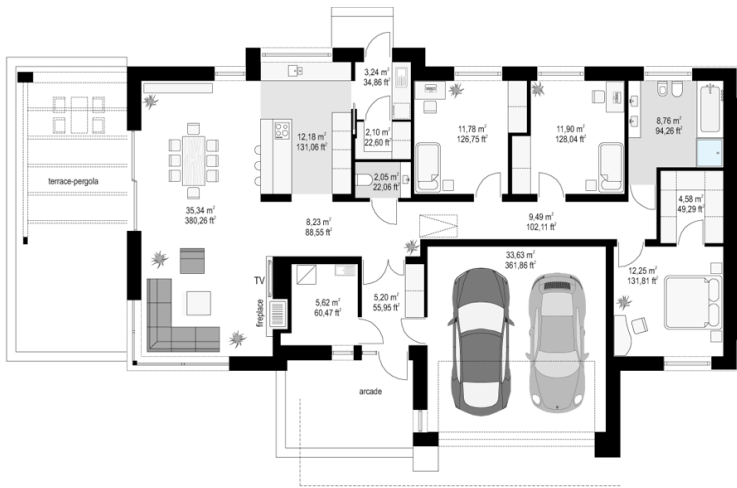
## CENA PROJEKTU: 1170.00 \$



	Energy-saving package	bezp.
	Ventilation and fireplace package	90
	Central vacuum package	70
	The electronic version of the project	120
	Solar installation package	70
	Underfloor heating package	80
	Heat pump package	70
	Water jacket package	70
	Boiler for solid fuel package	80
	Air conditioning package	80
	Fencing projects	140

Dream 3 house plan is another project from a series of houses Dream house plan - a one-storey building, built on a rectangular plan, with a garage part protruding on the front, covered with a multi-slope roof with a slope of 30 degrees. A design with a little more sophisticated shape compared to the base version, with interesting details and architectural solutions, creating an extraordinary and original effect. The modern stylistics of the design, obtained by the appropriate selection of materials, cladding, the use of large glazing, opening the interior to the surrounding garden. The main elements that give character to the shape are: a garage protruding in front of the front wall with a corner roof over the entrance arcade, a beautifully accented entrance door with transoms, and a terrace section extending the living room. Thanks to the location of terraces on the side of the building, the house is perfect even for a plot of land with entry from the south. Dream 3 living room is lit on three sides, so the building can be located on a plot with a garden on the side or back, or even from the front of the house, in the corner of the plot. Interior: The original location of the garage, in the central part of the block, gives easy access between the garage, vestibule and boiler room, which is rarely found in one-story houses with a rectangular shape. Here, the garage is in a perfect place - at the entrance, close to the lobby and the kitchen. The boiler room next to the living room and the fireplace makes us have one common chimney in the whole building. From the vestibule, we enter the lobby and the living area of the interconnected rooms of the dining room and kitchen. The kitchen is separated from the dining room by a peninsula with a barge. From the kitchen we have access to the pantry, laundry and business exit to the back of the house. The living room is lit on each side, and through a beautiful sliding door in the side facade we go out to the terrace partially covered with a pergola. On the other side of the house we have three bedrooms, a bathroom and a dressing room. Above the ground floor is designed ceiling and rafter roof truss, thanks to which there is an additional large attic - warehouse, for any arrangement. We get to the attic by ladder stairs from the lobby. The roof structure can also be redesigned for truss trusses and exclude this space from any use. Dream 3 house plan is a comfortable, comfortable mini-villa for a family of four - functional, practical, without running up the stairs. The building is energy-saving, has a simple construction, will be easy to build and cheap to maintain.

Rzuty:



Elewacje:

