

Dane techniczne:

Kubatura:	849 m ³
Powierzchnia zabudowy:	207.35 m ²
Powierzchnia całkowita:	207.35 m ²
Powierzchnia netto:	132.73 m ²
Powierzchnia użytkowa:	127.1 m ²
Wymiary domu:	23 x 13.05 m
Minimalne wymiary działki:	29 x 21.05 m
Wysokość do kalenicy:	6,48 m / 21,25 ft
Powierzchnia dachu:	283 m ²
Kąt nachylenia dachu:	30 degrees

Koszty realizacji:

Realizacja stanu surowego otwartego:	51 430
Realizacja stanu surowego zamkniętego:	75 960
Koszt robót wykończeniowych:	70 650
Realizacja domu pod klucz:	146 600

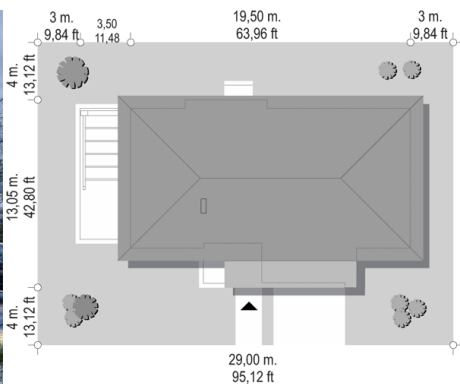
Koszty są podane w cenach netto, należy doliczyć podatek VAT

Materiały:

- Foundations - concrete bench and foundation walls with concrete blocks
- External walls - brick walls - aerated 24 blocks + polystyrene + thin-layer plaster
- Ceiling - monolithic reinforced concrete
- Elevation - thin-layer plaster on polystyrene
- Roof - ceramic tile



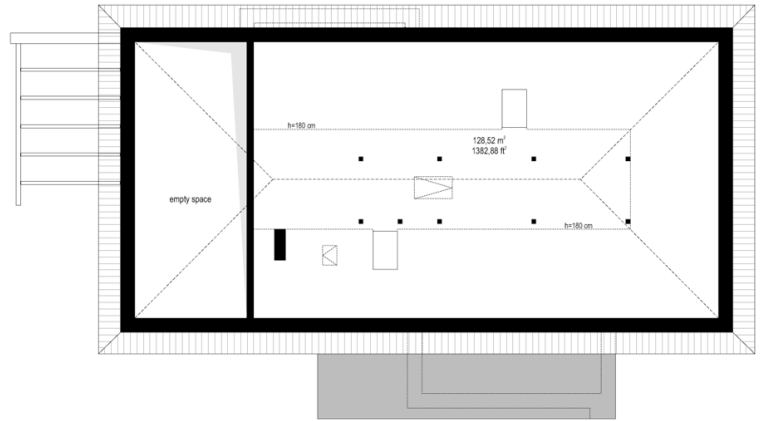
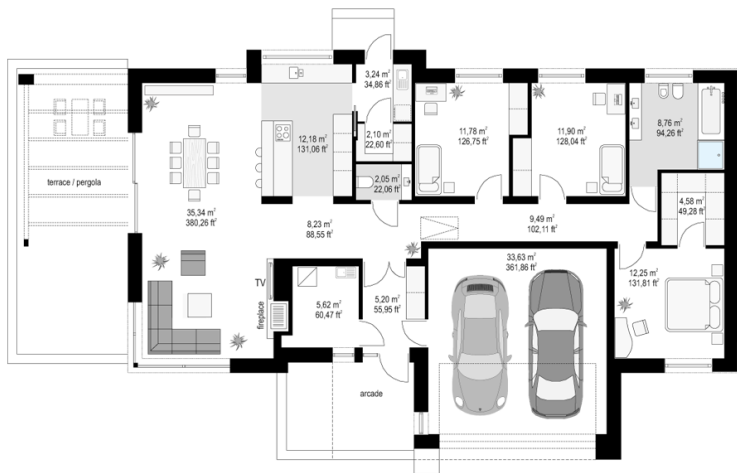
CENA PROJEKTU: 1170.00 \$



	Energy-saving package	bezp.
	Ventilation and fireplace package	90
	Central vacuum package	70
	The electronic version of the project	120
	Solar installation package	70
	Underfloor heating package	80
	Heat pump package	70
	Water jacket package	70
	Boiler for solid fuel package	80
	Air conditioning package	80
	Fencing projects	140

Dream 2 house plan is another project from the series of our Dream houses, one-story building, built on a rectangular plan, covered with a hip roof with a slope of 30 degrees. The project combines the simplicity of construction and solid, with interesting details and architectural solutions, creating an extraordinary and original effect. The modern stylistics of the design, obtained by the appropriate selection of materials, cladding, the use of large glazing, opening the interior to the surrounding garden. The main elements that give character to the shape are: a garage with a roof over the entrance arcade protruding from the front wall, a beautifully accented entry door with transoms, and a terrace section extending the living room, which thanks to the location on the side of the building makes the house perfect for various plots - including those with entry from the south. The living room in Dream 2 house plan is illuminated on three sides, so the building can be located on a plot with a garden on the side or back, or even from the front of the house, in the corner of the plot. Interior: The original garage location, in the central part of the block, gives easy access between the garage, vestibule and boiler room, which is rare in one-story houses with a rectangular shape (usually the garage is cut off from the block, or located behind the bedrooms). Here, the garage is in a perfect place - at the entrance, close to the lobby and the kitchen. The boiler room next to the living room and the fireplace makes us have one common chimney in the whole building. From the vestibule, we enter the lobby and the living area of the interconnected rooms of the dining room and kitchen. The kitchen is separated from the dining room by a peninsula with a barge. With the kitchen we have access to the pantry, laundry and business exit to the back of the house. The living room is lit on each side, and through a beautiful sliding door in the side facade we go out to the terrace partially covered with a pergola. On the other side of the house we have three bedrooms, a bathroom and a dressing room. Above the ground floor is designed ceiling and rafter roof truss, thanks to which there is an additional large attic - warehouse, for any arrangement. We get to the attic by ladder stairs from the lobby. The roof structure can also be redesigned for truss trusses and exclude this space from any use. Dream 2 house plan is a comfortable, comfortable mini-villa for a family of four - functional, practical, without running up the stairs. The building is energy-saving, has a simple construction, will be easy to build and cheap to maintain

Rzuty:



Elewacje:

