

Dane techniczne:

Kubatura:	989 m ³
Powierzchnia zabudowy:	207.35 m ²
Powierzchnia całkowita:	207.35 m ²
Powierzchnia netto:	132.65 m ²
Powierzchnia użytkowa:	127.02 m ²
Wymiary domu:	23 x 13.05 m
Minimalne wymiary działki:	29 x 21.05 m
Wysokość do kalenicy:	6,57 m / 21,55 ft
Powierzchnia dachu:	276.5 m ²
Kąt nachylenia dachu:	30 degrees

Koszty realizacji:

Realizacja stanu surowego otwartego:	49 770
Realizacja stanu surowego zamkniętego:	74 480
Koszt robót wykończeniowych:	69 290
Realizacja domu pod klucz:	143 760

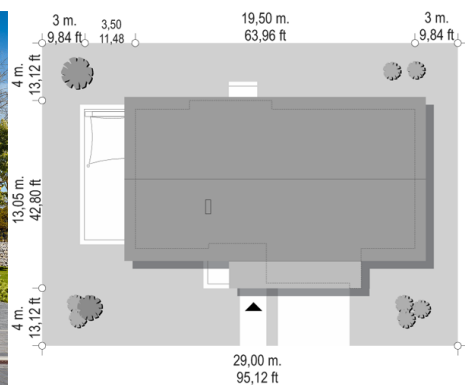
Koszty są podane w cenach netto, należy doliczyć podatek VAT

Materiały:

- Foundations - concrete bench and foundation walls with concrete blocks
- External walls - brick walls - aerated 24 blocks + polystyrene + thin-layer plaster
- Ceiling - monolithic reinforced concrete
- Elevation - thin-layer plaster on polystyrene
- Roof - ceramic tile



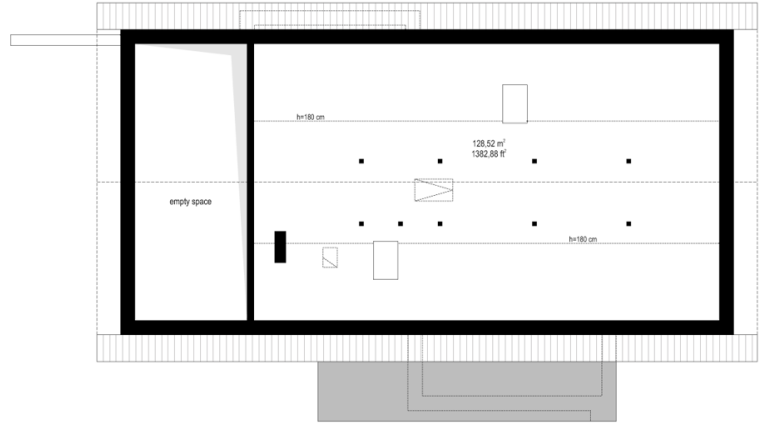
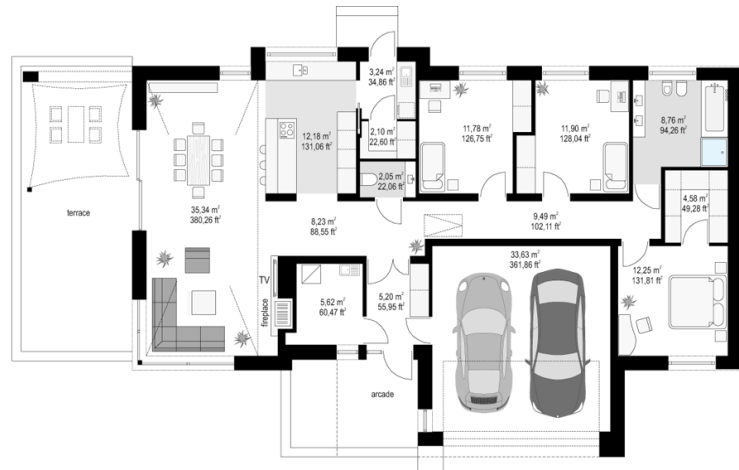
CENA PROJEKTU: 1170.00 \$



	Energy-saving package	bezp.
	Ventilation and fireplace package	90
	Central vacuum package	70
	The electronic version of the project	120
	Solar installation package	70
	Underfloor heating package	80
	Heat pump package	70
	Water jacket package	70
	Boiler for solid fuel package	80
	Air conditioning package	80
	Fencing projects	140
	Septic tanks sealed package	bezp.

Dream house plan is a basic version from the series of our "Dream Houses". The house is designed for a family of four. A rectangular building with a partially protruding garage. The house is crowned with a gable roof with an angle of 30 degrees. The project combines the simplicity of construction and solid, with interesting details and architectural solutions, creating an extraordinary and original effect. The modern stylistics of the design, obtained by the appropriate selection of materials, cladding, the use of large glazing, opening the interior to the surrounding garden. The main elements that give character to the shape are: a garage with a roof over the entrance arcade protruding from the front wall, a beautifully accented entry door with transoms, and a terrace section extending the living room, which thanks to the location on the side of the building makes the house perfect for various plots - including those with entry from the south. The "Dream" living room is illuminated on three sides, so the house can be located on a plot with a garden on the side or back. The interior of the house: The original garage location, in the central part of the block, allows easy communication access between the garage, vestibule and boiler room, which is rarely found in rectangular-shaped one-story houses (usually the garage is cut off from the block, or located behind the bedrooms). Here, the garage is in a perfect place - at the entrance, close to the lobby and the kitchen. The boiler room next to the living room and the fireplace makes us have one common chimney in the whole building. From the vestibule, we enter the lobby and the living area, with a nice kitchen with a peninsula, pantry, laundry and garden entrance. Next we have a living room with a raised ceiling. The void above the living room visually enlarges this beautiful room, and the high window at the top lets in a lot of light and opens the living room to the garden and terrace with a roof - a sail. On the other side of the house we have three bedrooms, a bathroom and a dressing room. Above the ground floor is designed ceiling and rafter roof truss, thanks to which there is an additional large attic - warehouse, for any arrangement. Of course, you can also re-design the roof structure for truss trusses and disable this space from any use. Dream house is a very comfortable, comfortable home for four people. He has everything a family can need. The building has a simple structure, it will be easy to build, and thanks to a compact body and great materials and insulation it is energy-saving and will be cheap to maintain.

Rzuty:



Elewacje:

