

Dane techniczne:

Kubatura:	899 m ³
Powierzchnia zabudowy:	206.87 m ²
Powierzchnia całkowita:	240.56 m ²
Powierzchnia netto:	129.21 m ²
Powierzchnia użytkowa:	123.72 m ²
Wymiary domu:	19.5 x 12.4 m
Minimalne wymiary działki:	26.5 x 20.4 m
Wysokość do kalenicy:	6,57 m / 21,55 ft
Powierzchnia dachu:	279.1 m ²
Kąt nachylenia dachu:	30 degrees

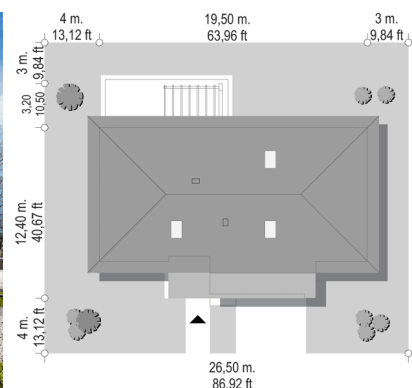
Koszty realizacji:

Realizacja stanu surowego otwartego:	42 610
Realizacja stanu surowego zamkniętego:	68 200
Koszt robót wykończeniowych:	69 440
Realizacja domu pod klucz:	137 640

Koszty są podane w cenach netto, należy doliczyć podatek VAT

Materiały:

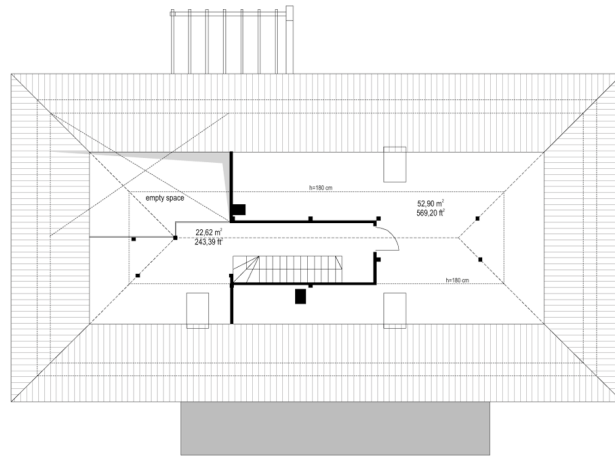
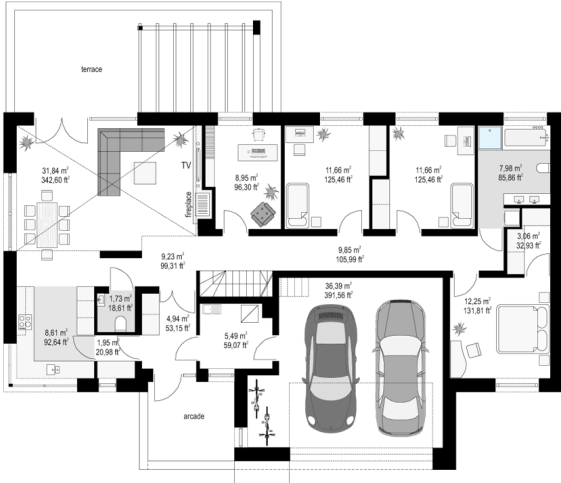
- Foundations - concrete bench and foundation walls with concrete blocks
- External walls - brick walls - aerated 24 blocks + polystyrene + thin-layer plaster
- Ceiling - monolithic reinforced concrete
- Elevation - thin-layer plaster on polystyrene
- Roof - ceramic tile

**CENA PROJEKTU: 1140.00 \$**

	Energy-saving package	bezp.
	Ventilation and fireplace package	90
	Central vacuum package	70
	The electronic version of the project	120
	Solar installation package	70
	Underfloor heating package	80
	Heat pump package	70
	Water jacket package	70
	Boiler for solid fuel package	80
	Air conditioning package	80
	Fencing projects	140

House design Dream 6 is another project from a series of Dream houses from our studio. A one-storey house, with an attic, to be arranged, built on a rectangular plan, with a garage part protruding on the front, covered with a hipped roof with a 30 degree angle of inclination. The design has a modern style and combines a traditional shape with a classic roof, with modern finishing materials and details. The combination of white plastered walls with claddings imitating concrete, as well as gray or graphite tiles give the elegant and representative appearance of the building. Despite the small surface, the house looks very comfortable and larger than it really is. The main stylistic details of the project are: a protruding garage and entrance gate, and a representative front door with transoms. From the garden side we have large glazing that opens the living room to the terrace and garden, and a pergola covering part of the terrace. Interior: other than the location of the garage, in the central part of the block, it facilitates communication between the garage, vestibule and boiler room, which is rarely found in rectangular shaped ground floor houses. The garage is in a great place - at the entrance, near the lobby, kitchen and pantry. From the vestibule, we enter the lobby and straight into the living room. The living room is illuminated from two sides - from the garden with wide terrace doors, and from the top of the building. The attraction of the living room is the emptiness above the living room with a mezzanine in the attic, enlarging the living space visually. On the other side of the house we have four rooms, a bathroom and a wardrobe. Above the ground floor is designed attic, with mezzanine above the living room enlarging its space, and an additional attic space, which can remain a non-usable attic (home storage), or it can be developed into utility rooms - according to the wishes and needs of the owners. Dream 6 house plan is a comfortable, comfortable villa for a family of four - functional and practical. The building is energy-saving, has a simple construction, will be easy to build and cheap to maintain.

Rzuty:



Elewacje:

