

Dane techniczne:

Kubatura:	934 m ³
Powierzchnia zabudowy:	186.96 m ²
Powierzchnia całkowita:	233.98 m ²
Powierzchnia netto:	128.67 m ²
Powierzchnia użytkowa:	121.67 m ²
Wymiary domu:	21.67 x 10.3 m
Minimalne wymiary działki:	27.67 x 18.3 m
Wysokość do kalenicy:	6,57 m / 21,55 ft
Powierzchnia dachu:	290.7 m ²
Kąt nachylenia dachu:	30 degrees

Koszty realizacji:

Realizacja stanu surowego otwartego:	42 260
Realizacja stanu surowego zamkniętego:	66 830
Koszt robót wykończeniowych:	68 810
Realizacja domu pod klucz:	135 630

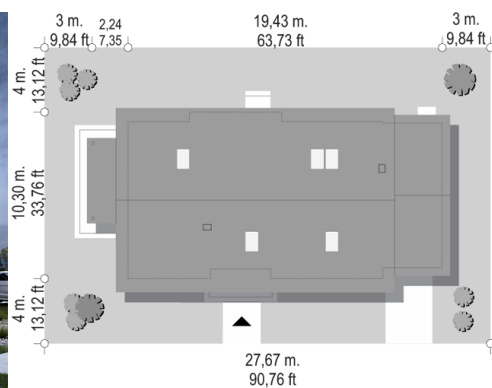
Koszty są podane w cenach netto, należy doliczyć podatek VAT

Materiały:

- Foundations - concrete bench and foundation walls with concrete blocks
- External walls - brick walls - aerated 24 blocks + polystyrene + thin-layer plaster
- Ceiling - monolithic reinforced concrete
- Elevation - thin-layer plaster on polystyrene
- Roof - ceramic tile



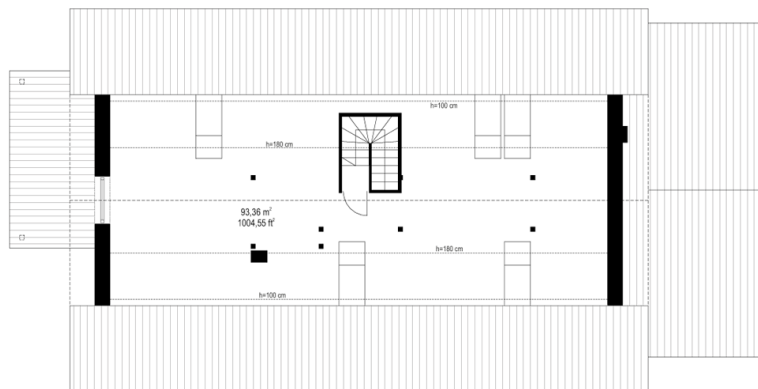
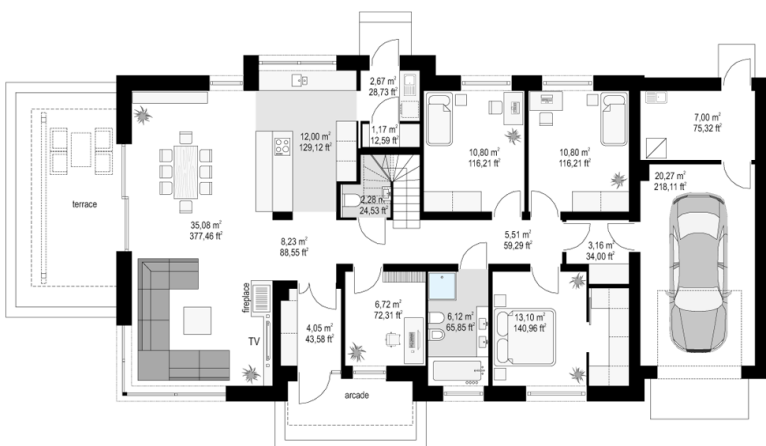
CENA PROJEKTU: 1140.00 \$



	Energy-saving package	bezp.
	Ventilation and fireplace package	90
	Central vacuum package	70
	The electronic version of the project	120
	Solar installation package	70
	Underfloor heating package	80
	Heat pump package	70
	Water jacket package	70
	Boiler for solid fuel package	80
	Air conditioning package	80
	Fencing projects	140

Dream 7 house plan is a project from a series of Dream houses. The building was designed as a one-story house with an attic - a sub-base for any development. A rectangular shape with a built-in garage was covered with two gable roofs with a slope angle of 30 degrees. The design has a modern style and combines a traditional shape with a classic roof, with modern finishing materials and details. The combination of white plastered walls with cladding imitating concrete, gray or graphite roof tiles, and wooden window frames, give the elegant and representative appearance of the building. The main stylistic details of the project are: entrance zone, with a roof and nice entrance doors, corner windows of the living room, partially covered garden terrace. The house is designed in such a way that the living room has lighting from three sides of the building, which allows locating the project on unfavourable plots - with entry from the south, with the garden on the side or even in front of the house (in the corner). Interior: Designing the interior we tried to meet basic task - arrange a comfortable interior with a living room and four rooms, as well as all necessary additional rooms. We enter the house with a comfortable vestibule right into the living area, with a living room, dining room, semi-enclosed kitchen. The kitchen is connected with a pantry, and a laundry room with an economic outlet to the back of the house. On the other side of the house we have three bedrooms, including a parents' bedroom with a wardrobe, a bathroom and an extra room - a study or an extra bedroom. Through a double door and an additional corridor, the house connects with the garage and boiler room. Above the ground floor there is an attic - an attic that can remain a non-usable attic (home storage), or it can be developed into utility rooms - according to the wishes and needs of the owners. Dream 7 house plan is a comfortable, comfortable home for a family of four and five - functional and practical. The building is energy-saving, has a simple construction, will be easy to build and cheap to maintain.

Rzuty:



Elewacje:

