

Dane techniczne:

Kubatura:	947 m ³
Powierzchnia zabudowy:	186.96 m ²
Powierzchnia całkowita:	219.06 m ²
Powierzchnia netto:	125.51 m ²
Powierzchnia użytkowa:	118.51 m ²
Wymiary domu:	22.93 x 11.25 m
Minimalne wymiary działki:	28.93 x 18.3 m
Wysokość do kalenicy:	6,72 m / 22,04 ft
Powierzchnia dachu:	233.8 m ²
Kąt nachylenia dachu:	35 degrees

Koszty realizacji:

Realizacja stanu surowego otwartego:	44 220
Realizacja stanu surowego zamkniętego:	71 340
Koszt robót wykończeniowych:	70 920
Realizacja domu pod klucz:	142 250

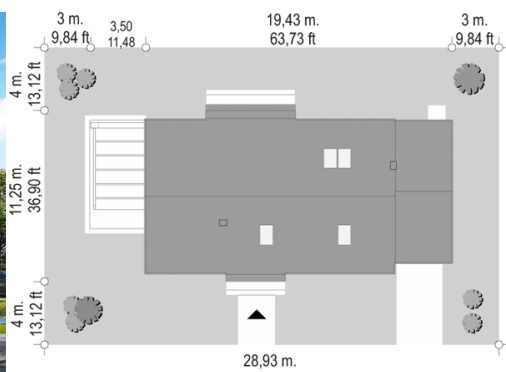
Koszty są podane w cenach netto, należy doliczyć podatek VAT

Materiały:

- Foundations - concrete bench and foundation walls with concrete blocks
- External walls - brick walls - aerated 24 blocks + polystyrene + thin-layer plaster
- Ceiling - monolithic reinforced concrete
- Elevation - thin-layer plaster on polystyrene
- Roof - ceramic tile



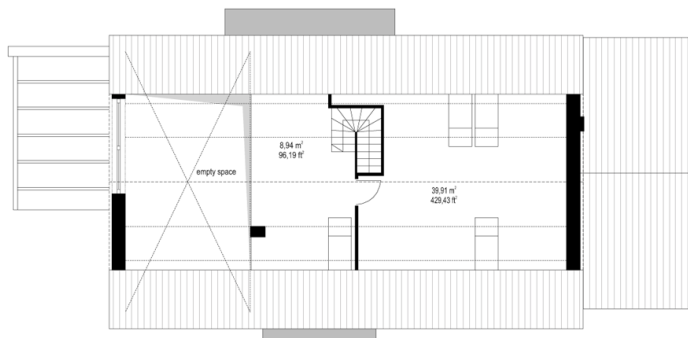
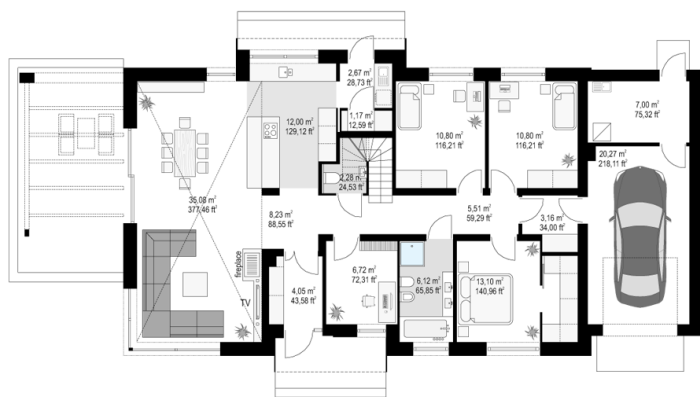
CENA PROJEKTU: 1140.00 \$



	Energy-saving package	bezpł.
	Ventilation and fireplace package	90
	Central vacuum package	70
	The electronic version of the project	120
	Solar installation package	70
	Underfloor heating package	80
	Heat pump package	70
	Water jacket package	70
	Boiler for solid fuel package	80
	Air conditioning package	80
	Fencing projects	140

Dream 8 house plan is another house from a popular series of Dream houses from our studio. The building was designed in a fashionable "house-barn" style. The house is one-story with an attic. It was covered with a gable roof with an inclination of 35 degrees. The roof has no hoods, the shape is maximally simple, modern, with boxed roofs concealed from the front and back, concealing the entrance and the bay window of the kitchen. The project uses interesting details and materials to enhance the appearance. The combination of a roof covered with a sheet of standing seam, white walls, grey cladding and wooden window frames provide a great visual effect. The house is modern, simple and at the same time elegant and representative. The main detail distinguishing the front elevation is the entrance part, with a platform, an interesting boxed roof and entrance doors with transoms. From the rear façade, this procedure was repeated in the kitchen bay. Undoubtedly, the most interesting is the top of the house with a window running through the entire height of the façade, which brightens the living room with a void and mezzanine, opening the interior to the terrace with a pergola and garden. The house is designed in such a way that the living room has lighting from three sides of the building, which allows you to locate it on an unfavorable plot - with entry from the south, or with a garden on the side. While designing the interior, we tried to meet the basic task - to fit a comfortable four rooms + living room, and all necessary additional rooms. We enter the house with a comfortable vestibule right into the living area, with a living room, dining room and semi-closed kitchen. The kitchen is connected with a pantry, and a laundry room with an economic outlet to the back of the house. On the other side of the house we have three bedrooms, including a parents' bedroom with a wardrobe, a bathroom and an extra room - a study or an extra bedroom. Through a double door and an additional corridor, the house connects with the garage and boiler room. Above the ground floor there is an attic, consisting of a void above the living room, then a mezzanine with stairs which is an extension of the living room downstairs and an additional attic-attic space that can be left as an attic (warehouse) or converted into additional utility rooms - according to the owner's wishes. Dream 8 house plan is a comfortable, comfortable house with modern and attractive architecture, designed for a family of four and five. The building is energy-saving, has a simple construction, will be easy to build and cheap to maintain

Rzuty:



Elewacje:

