

Dane techniczne:

Kubatura:	904 m ³
Powierzchnia zabudowy:	184.22 m ²
Powierzchnia całkowita:	184.22 m ²
Powierzchnia netto:	126.39 m ²
Powierzchnia użytkowa:	119.39 m ²
Wymiary domu:	19.43 x 10.4 m
Minimalne wymiary działki:	26.43 x 18.4 m
Wysokość do kalenicy:	6,57 m / 21,55 ft
Powierzchnia dachu:	269.8 m ²
Kąt nachylenia dachu:	30 degrees

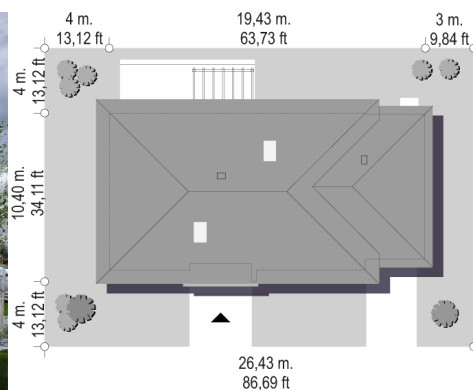
Koszty realizacji:

Realizacja stanu surowego otwartego:	41 770
Realizacja stanu surowego zamkniętego:	67 070
Koszt robót wykończeniowych:	68 920
Realizacja domu pod klucz:	137 710

Koszty są podane w cenach netto, należy doliczyć podatek VAT

Materiały:

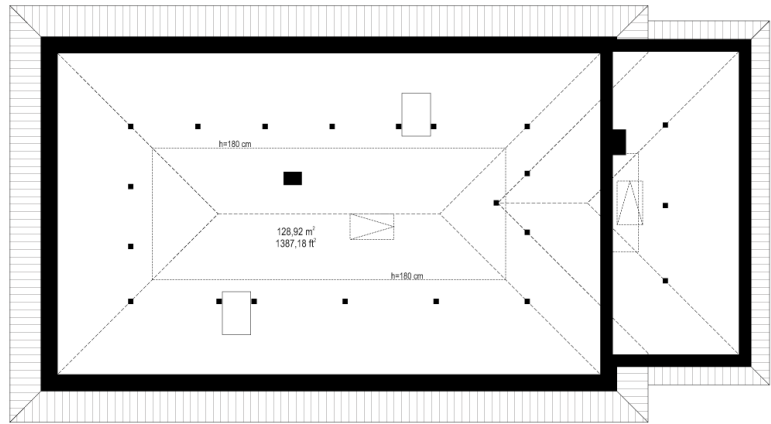
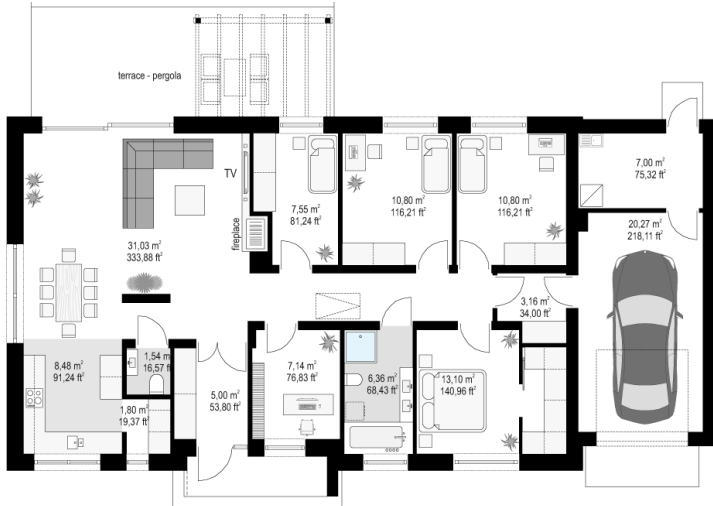
- Foundations - concrete bench and foundation walls with concrete blocks
- External walls - brick walls - aerated 24 blocks + polystyrene
- Ceiling - monolithic reinforced concrete
- Elevation - thin-layer plaster on polystyrene
- Roof - ceramic tile

**CENA PROJEKTU: 1140.00 \$**

	Energy-saving package	bezp.
	Ventilation and fireplace package	90
	Central vacuum package	70
	The electronic version of the project	120
	Solar installation package	70
	Underfloor heating package	80
	Heat pump package	70
	Water jacket package	70
	Boiler for solid fuel package	80
	Air conditioning package	80
	Fencing projects	140

Dream house plan 11 is a charming single-family house from the collection of our projects Dream houses. This is one of the least developed versions of the designs of this series, at the same time one of the prettiest and most exquisite. The rectangular shape with the garage was covered with two hipped roofs with an angle of inclination of 30 degrees. The design has a modern style and combines a traditional figure with modern details and finishing materials. The combination of white plastered walls with grey additions, grey tiles and window frames give the interior appearance full of elegance and elegance. The main decorations of the façade are: an entrance with an L-shaped roof and nice front doors, and a terrace zone on the garden side with large glazing from the living room and pergola. The house is designed for a plot with garden and solar lighting on the back or side of the building. The interior of the house has a comfortable living space, as well as five additional rooms, which is a very good result with a small area of the house. The house can be used freely even by a family of 2 + 4. Rooms can be arranged as children's bedrooms. One of the rooms can remain a home office / cabinet. We enter the interior with a comfortable vestibule to the living area, with a living room, dining room and open kitchen. The living room has a fireplace and TV wall, a place for comfortable rest, and wide balcony doors open the living room to the terrace and garden. From the living room through the hallway we get to the part of the house with the bedroom of parents with a dressing room, and children sleeping. Further, the house connects with the garage and business part of the building, through the utility room, with the garage and boiler room. The attic above the ground floor was designed as a storage space, which is reached by ladder stairs. "Dream 11" is an elegant, comfortable home for a family of four and six. Its functionality and practicality of interior design is combined with a solid construction and simplicity of architecture. The building is energy-saving, it has an easy to build structure, it will be inexpensive to maintain.

Rzuty:



Elewacje:

