

Dane techniczne:

Kubatura:	438 m ³
Powierzchnia zabudowy:	95.57 m ²
Powierzchnia całkowita:	95.57 m ²
Powierzchnia netto:	74.28 m ²
Powierzchnia użytkowa:	70.72 m ²
Wymiary domu:	8.76 x 10.91 m
Minimalne wymiary działki:	16.76 x 18.91 m
Wysokość do kalenicy:	6,43 m / 21,09 ft
Powierzchnia dachu:	139.7 m ²
Kąt nachylenia dachu:	30 degrees

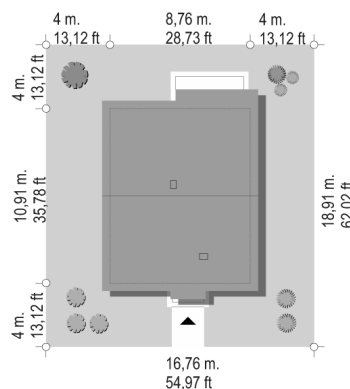
Koszty realizacji:

Realizacja stanu surowego otwartego:	22 700
Realizacja stanu surowego zamkniętego:	33 390
Koszt robót wykończeniowych:	39 490
Realizacja domu pod klucz:	72 900

Koszty są podane w cenach netto, należy doliczyć podatek VAT

Materiały:

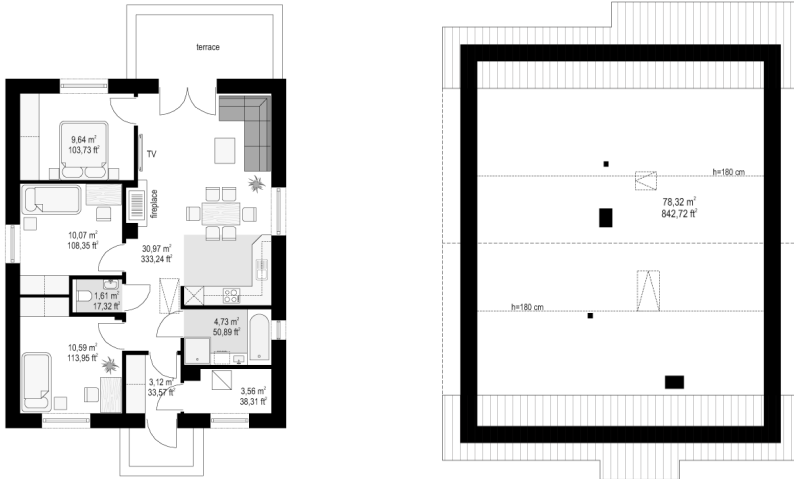
- Foundations - concrete bench and foundation walls with concrete blocks
- External walls - brick walls - aerated 24 blocks + polystyrene + thin-layer plaster
- Ceiling - monolithic reinforced concrete
- Elevation - thin-layer plaster on polystyrene
- Roof - ceramic tile

**CENA PROJEKTU: 1020.00 \$**

	Energy-saving package	bezpł.
	Ventilation and fireplace package	90
	Central vacuum package	70
	The electronic version of the project	120
	Solar installation package	70
	Underfloor heating package	80
	Heat pump package	70
	Water jacket package	70
	Boiler for solid fuel package	80
	Air conditioning package	80
	Fencing projects	140
	Septic tanks sealed package	bezpł.

Sophie 4 house plan is another variant version of the popular design of a single-family house from the Sophie series. The house has a simple structure, a simple shape. Thanks to its cost-effective form and its simplicity, it is easy to build and therefore inexpensive. At the same time, the house is comfortable thanks to its functionally laid out interior. Sophie 4 is narrower than the basic project, which will fit on a narrower plot. It also has a bit deeper shape, thanks to which the interior of the house is still the original four rooms. The house is covered with a gable roof with an angle of 30 degrees. Above the ground floor there is a wooden beam ceiling and a classic rafter roof truss. Thanks to this above the ground floor, we still have a large storage space for the attic to use. Of course, it is possible to make a roof construction with truss girders. We enter the house through the vestibule with a large wardrobe, straight to the hall and the living room. On the side of the vestibule there is a boiler room - in the base design with a gas boiler, but it can be easily adapted to a solid fuel boiler. Next to the boiler room we have a bathroom, on the other side there are two children's bedrooms with built-in wardrobes and a toilet. From the garden side there is a bedroom of parents, and of course a living area - a living room with a relax and a dining table, and a kitchenette. In the middle of the living room we have a television and fireplace wall. The house - taking into account a small usable area - is very functional and has an extensive program of rooms. There is no wasted space here - everything is logically and practically managed. The house from the outside has a very nice styling. The architecture of the house is unpretentious and pleasing to the eye. The building will perfectly blend with the surroundings both in the suburbs and in the countryside. Sophie 4 house plan is of course an all-year home, but it can also be a second holiday home. The decisive advantage of the Sophie series houses is their simplicity and functionality, which translates into the maximum investment effect obtained for small amounts of money. Each subsequent version of the house from this series we try to design even better and more sensibly. The house is designed as energy-saving, very well insulated. It will be cheap in later exploitation

Rzuty:



Elewacje:

