

Dane techniczne:

Kubatura:	807 m ³
Powierzchnia zabudowy:	146.11 m ²
Powierzchnia całkowita:	270.32 m ²
Powierzchnia netto:	188.57 m ²
Powierzchnia użytkowa:	188.57 m ²
Wymiary domu:	14.63 x 10.24 m
Minimalne wymiary działki:	22.63 x 19.79 m
Wysokość do kalenicy:	8,18 m / 26,83 ft
Powierzchnia dachu:	248.04 m ²
Kąt nachylenia dachu:	28 degrees

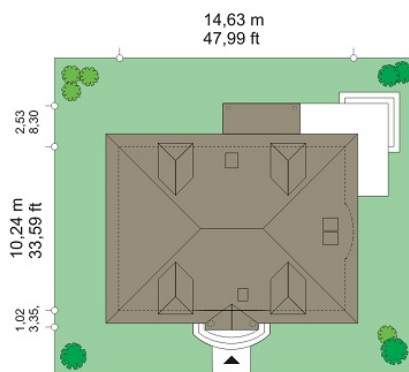
Koszty realizacji:

Realizacja stanu surowego otwartego:	58 800
Realizacja stanu surowego zamkniętego:	83 800
Koszt robót wykończeniowych:	63 300
Realizacja domu pod klucz:	147 000

Koszty są podane w cenach netto, należy doliczyć podatek VAT

Materiały:

- Foundations: concrete benches and foundation walls of concrete blocks
- External walls: brick walls - airbrick porotherm 25 + polystyrene + thin-layer plaster
- Ceiling: Teriva
- Elevations: thin-layer plaster on polystyrene
- Roofing: ceramic tile

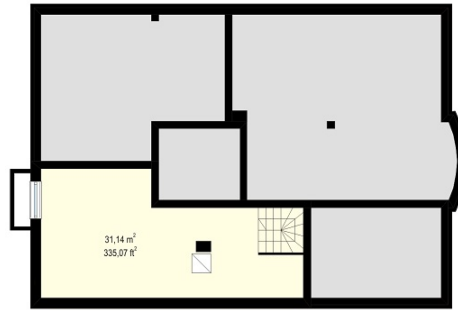
**CENA PROJEKTU: 1070.00 \$**

	Energy-saving package	bezpł.
	Ventilation and fireplace package	90
	Central vacuum package	70
	The electronic version of the project	120
	Solar installation package	70
	Underfloor heating package	80
	Heat pump package	70
	Water jacket package	70
	Boiler for solid fuel package	80
	Air conditioning package	80
	Fencing projects	140
	Septic tanks sealed package	bezpł.

Hetman house plan is a detached house for a family four-seven-residence with the possibility of living for a multigenerational family - children, parents and grandparents.

This is a one-storey house a loft covered with a hipped roof. House is partial basement and the economic base was placed there. Hetman house plan, its solid with symmetrical elevations refers to the Polish manor house, but in the modern sense. Breaking the monotony of the axial distribution of the interior even for a corner living room opening into garden and partly covered terrace, gives an interesting architectural effect. These elements give the house original, unique form, without affecting the increase in construction costs. The whole house was subordinated to the arrangement of the functional architecture of the interior. On the ground floor a living area with open space comprising: living room with dining area and lounge area, and partly open kitchen was designed. On the other side are two rooms and a separate bathroom. Rooms can be used as a separate flats for seniors, or as an additional rooms - office or guest bedroom. Opening the living room to the terrace and garden by the corner door will add charm to this large interior. On an attic four bedrooms and two bathrooms is scheduled. One of the rooms can be parent's bedroom with dressing room and a bathroom. To the basement, which is designed as an open large technical room leads staircase available from the hallway on the ground floor. The partial roof terrace will also use it in bad weather, or too much sunlight. Hetman house plan is also available in the mirror version.

Rzuty:



Elewacje:



