

Dane techniczne:

Kubatura:	896 m ³
Powierzchnia zabudowy:	201.73 m ²
Powierzchnia całkowita:	359.21 m ²
Powierzchnia netto:	277.15 m ²
Powierzchnia użytkowa:	266.65 m ²
Wymiary domu:	13.86 x 17.5 m
Minimalne wymiary działki:	20.86 x 25.5 m
Wysokość do kalenicy:	8,24 m / 27,02 ft
Powierzchnia dachu:	258.82 m ²
Kąt nachylenia dachu:	35 degrees

Koszty realizacji:

Realizacja stanu surowego otwartego:	82 600
Realizacja stanu surowego zamkniętego:	107 000
Koszt robót wykończeniowych:	81 000
Realizacja domu pod klucz:	187 900

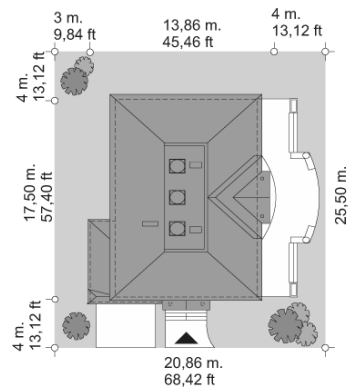
Koszty są podane w cenach netto, należy doliczyć podatek VAT

Materiały:

- Foundations - reinforced concrete
- External walls - single-layer Ytong 36 cm
- Ceiling - reinforced concrete Teriva
- Elevation - thin-layer plaster
- Roof - ceramic tile or shingles of roofing paper



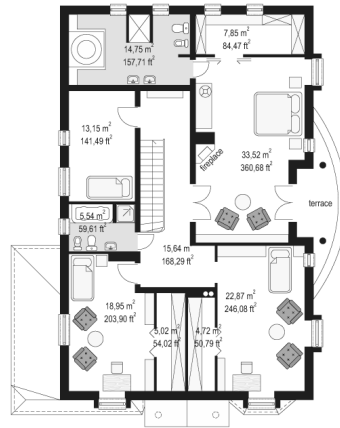
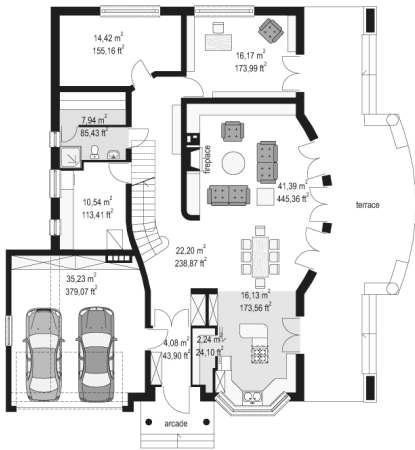
CENA PROJEKTU: 1320.00 \$



	Energy-saving package	bezpł.
	Ventilation and fireplace package	90
	Central vacuum package	70
	The electronic version of the project	120
	Solar installation package	70
	Underfloor heating package	80
	Heat pump package	70
	Water jacket package	70
	Boiler for solid fuel package	80
	Air conditioning package	80
	Fencing projects	140
	Septic tanks sealed package	bezpł.

Ambassador house plan is a large, elegant, two-story house for the family of 4 to 6 people. Architecture of this house expresses a sense of stability and comfort of a higher class. In this house plan, thanks to the entry-designed on the side of shorter-elevation there is a possibility of adaptation to the plot with a garden on the side. A rectangular block of the house with the garage built up and ornament entrance portico formed despite the multitude of details bright and clear interior layout and plan. The exterior view was subordinated to alignment and aesthetics while the interior is extremely functional..

Rzuty:



Elewacje:

