

## Dane techniczne:

Kubatura:	614 m <sup>3</sup>
Powierzchnia zabudowy:	175.11 m <sup>2</sup>
Powierzchnia całkowita:	223.18 m <sup>2</sup>
Powierzchnia netto:	177.7 m <sup>2</sup>
Powierzchnia użytkowa:	168.28 m <sup>2</sup>
Wymiary domu:	10 x 24.27 m
Minimalne wymiary działki:	18 x 32.27 m
Wysokość do kalenicy:	6,28 m / 20,60 ft
Powierzchnia dachu:	313 m <sup>2</sup>
Kąt nachylenia dachu:	35 degrees

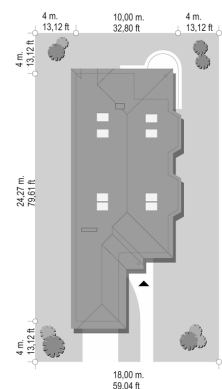
## Koszty realizacji:

Realizacja stanu surowego otwartego:	43 300
Realizacja stanu surowego zamkniętego:	66 400
Koszt robót wykończeniowych:	63 700
Realizacja domu pod klucz:	129 000

Koszty są podane w cenach netto, należy doliczyć podatek VAT

## Materiały:

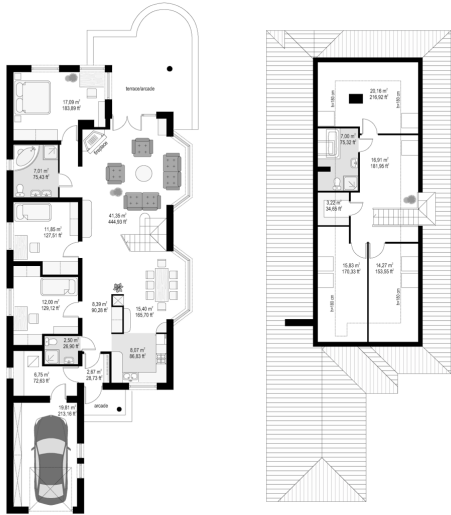
- Foundations - concrete benches, walls of concrete blocks
- External walls - bilayer walls of ceramic airbricks
- Ceiling - Teriva
- Roof - tile
- Elevation - thin-layer plaster

**CENA PROJEKTU: 970.00 \$**

	Energy-saving package	bezpł.
	Ventilation and fireplace package	90
	Central vacuum package	70
	The electronic version of the project	120
	Solar installation package	70
	Underfloor heating package	80
	Heat pump package	70
	Water jacket package	70
	Boiler for solid fuel package	80
	Air conditioning package	80
	Fencing projects	140
	Septic tanks sealed package	bezpł.

Dachshund 3 house plan is a convenient building on a very narrow plot - even a 15-meter. The house plan is planned in such way that attic, which provides additional rooms can be exploited already living or leave the attic unfinished. It can be also use as a separate flat for the child. On the ground floor a large living room with dining area and hall with two beautiful bay windows, there are also three bedrooms. The attic can be also transform into a separate flat for the child. This house plan is also available in mirror version.

## Rzuty:



## Elewacje:

