

## Dane techniczne:

Kubatura:	1230 m <sup>3</sup>
Powierzchnia zabudowy:	245.56 m <sup>2</sup>
Powierzchnia całkowita:	391.47 m <sup>2</sup>
Powierzchnia netto:	310.58 m <sup>2</sup>
Powierzchnia użytkowa:	287.56 m <sup>2</sup>
Wymiary domu:	20.6 x 16.6 m
Minimalne wymiary działki:	28.6 x 26.75 m
Wysokość do kalenicy:	8,91 m / 29,23 ft
Powierzchnia dachu:	460 m <sup>2</sup>
Kąt nachylenia dachu:	43 degrees

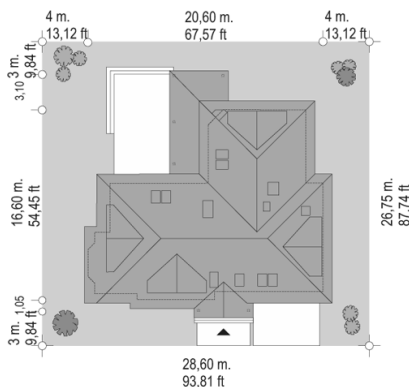
## Koszty realizacji:

Realizacja stanu surowego otwartego:	71 300
Realizacja stanu surowego zamkniętego:	110 000
Koszt robót wykończeniowych:	98 700
Realizacja domu pod klucz:	208 700

Koszty są podane w cenach netto, należy doliczyć podatek VAT

## Materiały:

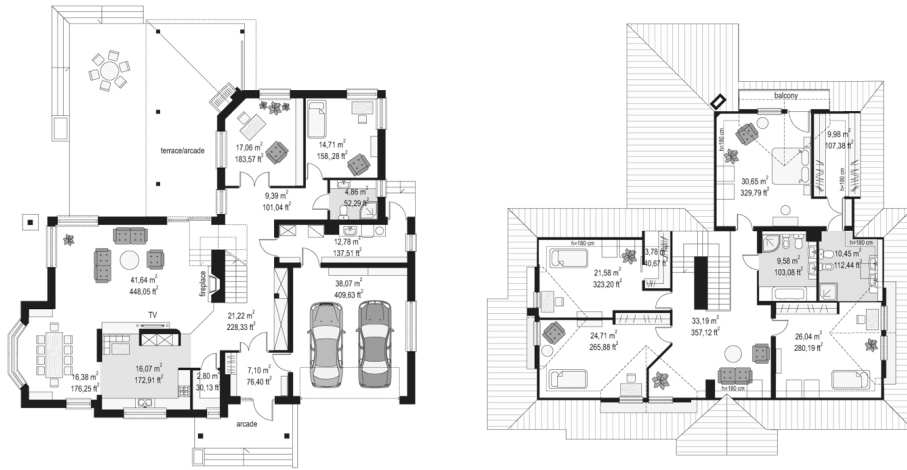
- Foundations - concrete benches, walls of concrete blocks
- External walls - bilayer: porotherm + polystyrene
- Internal walls - porotherm
- Ceiling - Teriva
- Roof - tile
- Elevation - thin-layer plaster

**CENA PROJEKTU: 1250.00 \$**

	Energy-saving package	bezpł.
	Ventilation and fireplace package	90
	Central vacuum package	70
	The electronic version of the project	120
	Solar installation package	70
	Underfloor heating package	80
	Heat pump package	70
	Water jacket package	70
	Boiler for solid fuel package	80
	Air conditioning package	80
	Fencing projects	140
	Septic tanks sealed package	bezpł.

Ash tree house plan is a large, comfortable detached house for a nice plot. The building has been designed for the family of 4 to 7 people, with the possibility of fencing housing for seniors. The house plan of villa is scheduled on L-shaped so as to provide maximum protection and intimacy for a large, partially covered terrace. It's the perfect place to rest. The living area consists of living room, dining room, lounge and a large kitchen. In the lobby an elegant staircase wrapped around the central massive fireplace wall was designed. On the attic there are four bedrooms with bathrooms and dressing rooms there is also enlarge hall that can serve as a living room or tv room. Outside in the arcade garden the outdoor fireplace was also designed. There is also available a mirror version of the Ash tree house plan.

## Rzuty:



## Elewacje:

