

Dane techniczne:

| | |
|----------------------------|-----------------------|
| Kubatura: | 1823 m ³ |
| Powierzchnia zabudowy: | 301.58 m ² |
| Powierzchnia całkowita: | 539.49 m ² |
| Powierzchnia netto: | 377.89 m ² |
| Powierzchnia użytkowa: | 346.61 m ² |
| Wymiary domu: | 22.83 x 20 m |
| Minimalne wymiary działki: | 29.83 x 28 m |
| Wysokość do kalenicy: | 8,70 m / 28,54 ft |
| Powierzchnia dachu: | 454 m ² |
| Kąt nachylenia dachu: | 20 degrees |

Koszty realizacji:

| | |
|--|---------|
| Realizacja stanu surowego otwartego: | 101 560 |
| Realizacja stanu surowego zamkniętego: | 150 570 |
| Koszt robót wykończeniowych: | 116 500 |
| Realizacja domu pod klucz: | 267 060 |

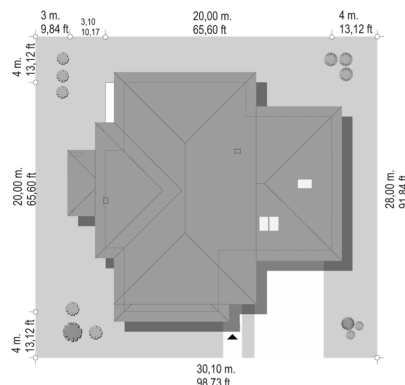
Koszty są podane w cenach netto, należy doliczyć podatek VAT

Materiały:

- Foundations - concrete bench and foundation walls with concrete blocks
- External walls - brick walls -porotherm 25 blocks + polystyrene + thin-layer plaster
- Ceiling - monolithic
- Elevation - thin-layer plaster on polystyrene
- Roof - tile or metal roofing tile



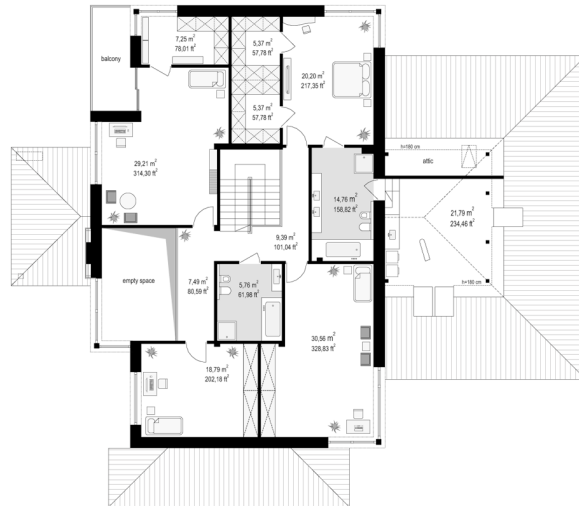
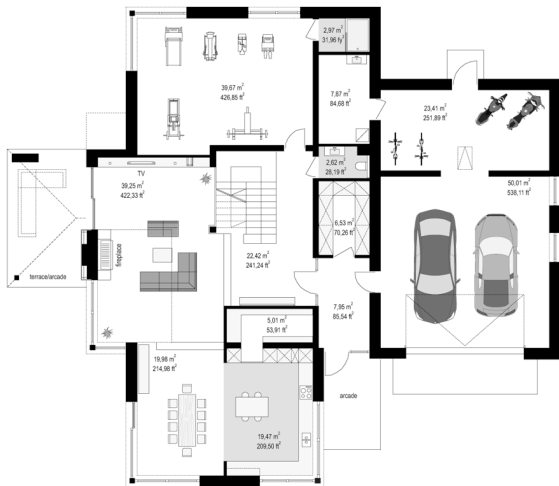
CENA PROJEKTU: 1970.00 \$



| | | |
|--|---------------------------------------|--------|
| | Energy-saving package | bezpł. |
| | Ventilation and fireplace package | 90 |
| | Central vacuum package | 70 |
| | The electronic version of the project | 120 |
| | Solar installation package | 70 |
| | Underfloor heating package | 80 |
| | Heat pump package | 70 |
| | Water jacket package | 70 |
| | Boiler for solid fuel package | 80 |
| | Air conditioning package | 80 |
| | Fencing projects | 140 |
| | Septic tanks sealed package | bezpł. |

House with a view E is a variant version of the project from the popular series of "Houses with a view". The design differs from the basic variant with an enlarged body and building surface (the main body of the building is extended by almost 2 meters), and the changed - reduced inclination of roof slopes, which makes the building a bit lower. The house is also slightly narrower - it has a narrower living room, which will fit on a narrower plot and has a narrower front façade. The building was designed as a two-storey modern urban villa, consisting of the main one-storey block covered with a hipped roof, and a built-in garage part, covered with a three-wing lower roof. The appearance of the house is emphasized by the characteristic corner large glazing, and walls divided by horizontal stripes of various finishes - of stone, wood or plaster. The garden façade by withdrawing the living room is a long wall opening the house to the surrounding garden. The entrance of the house is underlined with an indented arcade with a landing and wide entrance doors with transoms. From the side of the garden, the façade is decorated by partial terrace roofing and wide balcony windows. The interior of the house is divided into a living and utility part on the ground floor, and bedrooms upstairs. We enter the house with a spacious vestibule with a cloakroom straight to the representative lobby and further to the living room, dining room and kitchen. There is no empty space above the living room - the only connection of the ground floor space with the first floor is the wide opening of the stairs. On the ground floor there is also an additional room - a study or a guest bedroom, a bathroom, a boiler room, and a nice garage with utility facilities. On the first floor we have three base bedrooms with two bathrooms (including parents' suite with bathroom and dressing room), and space for an additional two rooms - space for any use and arrangement. A house with a view version E is a luxury villa with a large space, for a comfortable apartment. For any large family. The building, thanks to the use of energy-saving installation solutions and modern warm materials, will be inexpensive in later operation.

Rzuty:



Elewacje:

